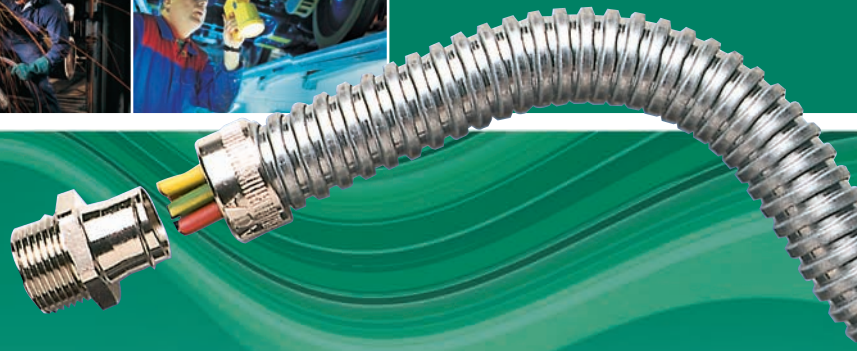


Metallic systems

Quick Selection Guide

Quick Selection Guide - Metallic systems

Type	TYPE S STEEL CONDUIT	TYPE SS STAINLESS STEEL CONDUIT	TYPE SP LIQUID RESISTANT CONDUIT	TYPE SN LIQUID RESISTANT NYLON CONDUIT	TYPE LFH-SP LOW FIRE HAZARD CONDUIT	TYPE SPL LIQUID TIGHT CONDUIT	TYPE SPLHC EXTREME TEMPERATURE CONDUIT	TYPE SPUL CSA APPROVED/UL LISTED CONDUIT	TYPE SB STEEL BRAIDED CONDUIT	TYPE STC STEEL TINNED COPPER BRAIDED CONDUIT	TYPE SBN NEW STAINLESS STEEL BRAIDED CONDUIT	TYPE SSBGS NEW STAINLESS STEEL BRAIDED STEEL CONDUIT	TYPE SPB LIQUID RESISTANT BRAIDED CONDUIT	TYPE SPTC LIQUID RESISTANT TINNED COPPER BRAIDED CONDUIT	TYPE SPLHCB LIQUID TIGHT EXTREME TEMPERATURE CONDUIT	
Example																
Conduit Material	Galvanised Steel	Stainless Steel	Galvanised Steel	Galvanised Steel	Galvanised Steel	Galvanised Steel	Galvanised Steel	Galvanised Steel	Galvanised Steel	Galvanised Steel	Stainless Steel	Galvanised Steel	Galvanised Steel	Galvanised Steel	Galvanised Steel	
Covering/Overbraid			PVC	PA (Nylon)	Polyolefin	PVC	Thermoplastic Rubber	PVC	Galvanised Steel	Tinned Copper	Stainless Steel	Stainless Steel	PVC & Stainless Steel	PVC & Tinned Copper	Rubber & Stainless Steel	
IP RATING - (with appropriate fitting)	IP40	IP40	IP65	IP65	IP66	IP66	IP66	IP66	IP66	IP66	IP66	IP66	IP66	IP66	IP66	
IP54																
IP65																
IP66																
IP67																
IP68																
IP69K																
Static Temp - Min Max	-50 °C +300 °C	-50 °C +350 °C	-15 °C +70 °C	-40 °C +120 °C	-25 °C +90 °C	-20 °C +105 °C	-65 °C +135 °C	-15 °C +75 °C	-50 °C +300 °C	-50 °C +300 °C	-50 °C +300 °C	-50 °C +300 °C	-15 °C +70 °C	-15 °C +70 °C	-65 °C +135 °C	
UV Resistance	Very High	Very High	Very High	High	High	Very High	Very High	High	Very High	Very High	Very High	Very High	Very High	Very High	Very High	
Flexibility	High	High	High	Medium	High	Medium	Very High	Medium	High	High	High	High	High	High	Very High	
Fatigue Life	High	High	Medium	Medium	Medium	Medium	High	Medium	High	High	High	High	Medium	Medium	High	
Low Fire Hazard	Inherent	Inherent			Enhanced				Inherent	Inherent	Inherent	Inherent				
Halogen Free	●	●		●	●		●	●	●	●	●	●		●	●	
Self Extinguishing	□		●	●	●	●	●	●					●	●	●	
EMI Screen	□								Enhanced	High	Standard	Standard	Enhanced	High	Standard	
High Mechanical Strength	●	●	●	●	●	●	●	●	●	●	●	●	●	●	●	
High Abrasion Resistance	●	●	●	●	●	●	●	●	●	●	●	●	●	●	●	
Approvals																
Key Application																
Page Number	50	50	52	52	52	55	55	55	58	58	58	58	60	60	61	



Metallic Systems

Conduit, Fittings & Accessories

Range Overview

Adaptaflex have a choice of fifteen individual metallic conduit systems manufactured either in galvanized steel or stainless steel.

A range of 3 different conduit types provide a solution for liquid resistant specifications with a further 3 conduit options in liquid tight covered steel conduit for especially demanding environments. Conduit ranges are offered in nominal conduit size from 3mm for CCTV/roller shutter doors and for protecting fibre optics cables right up to 75mm for larger cable carrying capacity.

Overbraided conduits are particularly suitable for installation in abrasive environments. Where applications call for enhanced low fire hazard properties or EMI screening then there is the option of high specification tinned copper overbraided for greater EMI protection levels.

System approvals available:



IEC 61386



LOW VOLTAGE DIRECTIVE

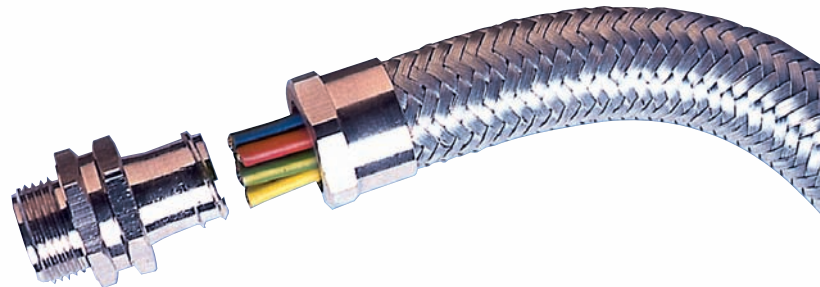


In addition a range of fittings are specifically designed to maintain system integrity including fixed and swivel fittings, straights, 90°, 45°, and a host of accessories including locknuts, enlargers, reducers and converters.

Many of our conduit systems have industry recognised approvals including British Kitemark, CE Approval, UL Listing, NF, LUL, DB, and Lloyds Register amongst others.

Advantages

- High compression/crush strength
- Tensile strength - pull off load under tension
- Impact resistance
- Inherent fire protection on uncoated versions
- Corrosion resistant - stainless steel options
- Braided - High level EMI screening with tinned copper overbraided
- Greater temperature tolerances



Ranges include:

ADAPTASTEEL SYSTEM **STAYFLEX** SYSTEM

Adaptasteel metallic systems

TYPE S & SS FLEXIBLE STEEL CONDUIT & TYPE S FITTINGS



PRODUCT CHARACTERISTICS

To order quote part no & reel length - e.g. S10/25M

Type

TYPE S

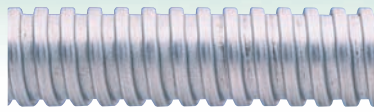
Description

INHERENT LOW FIRE HAZARD STEEL CONDUIT

Materials

Galvanised Steel - General Purpose

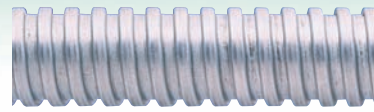
Example



TYPE SS

INHERENT LOW FIRE HAZARD STEEL CONDUIT

Stainless Steel - Corrosion Resistant

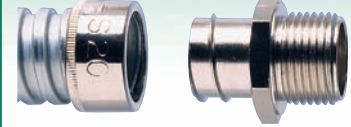


TYPE A

STRAIGHT FITTING - FIXED EXTERNAL THREAD

For insertion into knockouts using a locknut.

Nickel plated brass



NOMINAL CONDUIT SIZE (mm)
OUTSIDE DIAMETER (mm)

		TYPE S PART NUMBER	INSIDE DIAMETER (mm)	MINIMUM BEND RADIUS (mm)	REEL LENGTH (m) TYPE S ONLY
03	5.3	-	-	-	-
05	7.0	-	-	-	-
08	11.0	-	-	-	-
10	9.0	S10	6.8	25	25, 50
12	13.0	S12	10.3	30	10, 25, 50
16	16.0	S16	13.0	35	10, 25, 50
16	16.0	S16	13.0	35	10, 25, 50
20	20.5	S20	16.9	45	10, 25, 50
25	25.0	S25	21.4	55	10, 25, 50
32	32.0	S32	28.1	60	10, 25
40	42.5	S40	37.7	80	10, 25
50	53.0	S50	48.4	90	10, 25
63	62.5	S63	57.5	115	10
75	77.0	S75	70.0	150	10

		TYPE S PART NUMBER	INSIDE DIAMETER (mm)	MINIMUM BEND RADIUS (mm)	REEL LENGTH (m) TYPE S ONLY
		SS03	3.2	20	20
		SS05	4.8	38	20
		SS08	8.0	50	10
		SS10	6.8	25	25, 50
		SS12	10.3	30	25, 50
		SS16	13.0	35	10, 25, 50
		SS16	13.0	35	10, 25, 50
		SS20	16.9	45	10, 25, 50
		SS25	21.4	55	10, 25, 50
		SS32	28.1	60	10, 25
		-	-	-	-
		-	-	-	-
		-	-	-	-
		-	-	-	-
		-	-	-	-
		-	-	-	-

METRIC THREAD	PART NUMBER	PG THREAD	PART NUMBER
-	-	-	-
-	-	-	-
-	-	-	-
M12	S10/M12/A	PG7	S10/PG7/A
M16	S12/M16/A	PG9	S12/PG9/A
M16	S16/M16/A	PG11	S16/PG11/A
M20	S16/M20/A	PG11	S16/PG11/A
M20	S20/M20/A	PG16	S20/PG16/A
M25	S25/M25/A	PG21	S25/PG21/A
M32	S32/M32/A	PG29	S32/PG29/A
M40	S40/M40/A	PG36	S40/PG36/A
M50	S50/M50/A	PG42	S50/PG42/A
M63	S63/M63/A	PG48	S63/PG48/A
M75	S75/M75/A	-	-

IP Rating with appropriate fitting

IP40

IP65

IP66

IP67

IP68

NEW IP69k

Temperature Range

For use with following fittings;
Type S Fittings

Type S Fittings - Type A, B, F & C

n/a

n/a

n/a

n/a

n/a

UV Resistance

Very High

Flexibility & Fatigue Life

High Flexibility - High Fatigue Life

Fire Performance & EMI Screen



Approvals



System Applications

Lighting/Cable Track
Underfloor Wiring
Light Industrial

For use with following fittings;
Type S Fittings

Type S Fittings - Type A, B, F & C

n/a

n/a

n/a

n/a

n/a

Static Applications: -50 °C to +350 °C
Moving Applications: -45 °C to +250 °C

Very High

High Flexibility - High Fatigue Life



Food Industry
Railway
Corrosive Environments

For use with following conduit;
Type S & SS

Type S & SS Conduit

n/a

n/a

n/a

n/a

n/a

Static Applications: -50 °C to +300 °C
Moving Applications: -45 °C to +250 °C



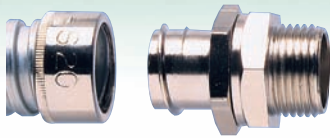


PRODUCT CHARACTERISTICS

Type
Description
Materials
Example

TYPE B

STRAIGHT FITTING - SWIVEL EXTERNAL THREAD
For insertion into threaded entries & knockouts.
Nickel plated brass



TYPE F

STRAIGHT FITTING - FIXED INTERNAL THREAD
For attachment to external threads & other fittings.
Nickel plated brass



TYPE C

SMOOTH ENTRY BUSH
For locking conduit into plain holes in enclosures.
Nickel plated brass



NOMINAL CONDUIT SIZE (mm)
OUTSIDE DIAMETER (mm)

METRIC THREAD	PART NUMBER	PG THREAD	PART NUMBER
M12	S10/M12/B	PG7	S10/PG7/B
M16	S12/M16/B	PG9	S12/PG9/B
M16	S16/M16/B	PG11	S16/PG11/B
M20	S16/M20/B	PG11	S16/PG11/B
M20	S20/M20/B	PG16	S20/PG16/B
M25	S25/M25/B	PG21	S25/PG21/B
M32	S32/M32/B	PG29	S32/PG29/B
M40	S40/M40/B	PG36	S40/PG36/B
M50	S50/M50/B	PG42	S50/PG42/B
-	-	-	-
-	-	-	-

METRIC THREAD	PART NUMBER
-	-
-	-
-	-
-	-
M20	S20/M20/F
M25	S25/M25/F
M32	S32/M32/F
-	-
-	-
-	-
-	-

HOLE SIZE (mm)	PART NUMBER
9	S10/9/C
12	S12/12/C
16	S16/16/C
16	S16/16/C
20	S20/20/C
25	S25/25/C
32	S32/32/C
40	S40/40/C
51	S50/51/C
61	S63/61/C
75	S75/75/C

IP Rating with appropriate fitting

IP40

IP65

IP66

IP67

IP68

NEW IP69k

For use with following conduit;
Type S & SS

Type S & SS Conduit

n/a

n/a

n/a

n/a

n/a

Temperature Range

Static Applications: -50 °C to +300 °C
Moving Applications: -45 °C to +250 °C

Fitting Characteristics



Approvals



For use with following conduit;
Type S & SS

Type S & SS Conduit

n/a

n/a

n/a

n/a

n/a

Static Applications: -50 °C to +300 °C
Moving Applications: -45 °C to +250 °C



For use with following conduit;
Type S & SS

Type S & SS Conduit

n/a

n/a

n/a

n/a

n/a

Static Applications: -50 °C to +300 °C
Moving Applications: -45 °C to +250 °C



Adaptasteel Liquid Resistant metallic systems

TYPE SP, SN & LFH-SP COVERED STEEL FLEXIBLE CONDUIT & TYPE SP FITTINGS



PRODUCT CHARACTERISTICS

To order quote part no, colour & reel length - e.g. SP10/BL/25M

Type

TYPE SP

Description

LIQUID RESISTANT GENERAL PURPOSE COVERED STEEL FLEXIBLE CONDUIT

Materials

PVC Covered Galvanised Steel
Colour Black (BL), Grey (GR) & Orange (OR)

Example



TYPE SN

LIQUID RESISTANT ABRASION & SOLVENT RESISTANT COVERED STEEL FLEXIBLE CONDUIT

PA (Nylon) Covered Galvanised Steel
Colour Black (BL) only.



TYPE LFH-SP

LIQUID RESISTANT ENHANCED LOW FIRE HAZARD COVERED STEEL FLEXIBLE CONDUIT

Polyolefin Covered Galvanised Steel
Colour Black (BL) only.



NOMINAL CONDUIT SIZE (mm)
OUTSIDE DIAMETER (mm)

NOMINAL CONDUIT SIZE (mm)	OUTSIDE DIAMETER (mm)	PART NUMBER	INSIDE DIAMETER (mm)	MINIMUM BEND RADIUS (mm)	REEL LENGTH (m) TYPE S ONLY
10	10.0	SP10	6.8	25	25, 50
12	14.0	SP12	10.3	30	25, 50
16	17.0	SP16	13.0	35	10, 25, 50
20	21.5	SP20	16.9	45	10, 25, 50
25	26.0	SP25	21.4	55	10, 25, 50
32	34.0	SP32	28.1	60	10, 25
40	44.5	SP40	37.7	80	10, 25
50	55.0	SP50	48.4	90	10, 25
63	64.5	SP63	57.5	115	10
75	79.0	SP75	70.0	150	10

PART NUMBER	INSIDE DIAMETER (mm)	MINIMUM BEND RADIUS (mm)	REEL LENGTH (m) TYPE S ONLY
-	-	-	-
SN12	10.3	30	25, 50
SN16	13.0	35	25, 50
SN20	16.9	45	25, 50
SN25	21.4	55	25, 50
SN32	28.1	60	25
-	-	-	-
-	-	-	-
-	-	-	-
-	-	-	-
-	-	-	-

PART NUMBER	INSIDE DIAMETER (mm)	MINIMUM BEND RADIUS (mm)	REEL LENGTH (m) TYPE S ONLY
-	-	-	-
LFH-SP12	10.3	30	25, 50
LFH-SP16	13.0	35	10, 25, 50
LFH-SP20	16.9	45	10, 25, 50
LFH-SP25	21.4	55	10, 25, 50
LFH-SP32	28.1	60	10, 25
LFH-SP40	37.7	80	10, 25
LFH-SP50	48.4	90	10, 25
LFH-SP63	57.5	115	20
LFH-SP75	70.0	150	10

IP Rating with appropriate fitting

IP54

IP65

IP66

IP67

IP68

NEW IP69k

For use with following fittings;
Type SP Fittings

Type SP Fittings - Type A, B, C, E & F

Type SP Fittings - Type M & C90

n/a

n/a

n/a

n/a

Temperature Range

Static Applications: -15 °C to +70 °C
Moving Applications: -5 °C to +90 °C

UV Resistance

Very High

Flexibility & Fatigue Life

High Flexibility - Medium Fatigue Life

Fire Performance & EMI Screen

Self Extinguishing

Approvals



System Applications

Machine Tools
Indoor/Outdoor
General Purpose

For use with following fittings;
Type SP Fittings

Type SP Fittings - Type A, B, C, E & F

Type SP Fittings - Type M & C90

n/a

n/a

n/a

n/a

Static Applications: -40 °C to +120 °C
Moving Applications: -25 °C to +150 °C

High

Medium Flexibility - Medium Fatigue Life

Self Extinguishing
Halogen Free



Industrial
Food Industry
Manufacturing Areas

For use with following fittings;
Type SP Fittings

Type SP Fittings - Type A, B, C, E & F

Type SP Fittings - Type M & C90

n/a

n/a

n/a

n/a

Static Applications: -25 °C to +90 °C
Moving Applications: -5 °C to +105 °C

High

Medium Flexibility - Medium Fatigue Life



Rail
Food Industry
Public Buildings



PRODUCT CHARACTERISTICS

Type
Description
Materials
Example

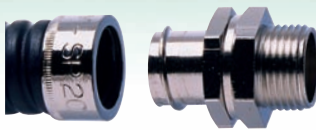
TYPE A

STRAIGHT FITTING - FIXED EXTERNAL THREAD
For insertion into knockouts using a locknut.
Nickel plated brass



TYPE B

STRAIGHT FITTING - SWIVEL EXTERNAL THREAD
For insertion into threaded entries & knockouts.
Nickel plated brass



TYPE C90 NEW

90° COMBINED FITTING & ELBOW
with male external thread.
Nickel plated steel



NOMINAL CONDUIT SIZE (mm)
OUTSIDE DIAMETER (mm)

		METRIC THREAD	PART NUMBER	PG THREAD	PART NUMBER
10	10.0	M12	SP10/M12/A	PG7	SP10/PG7/A
12	14.0	M16	SP12/M16/A	PG9	SP12/PG9/A
16	17.0	M16	SP16/M16/A	PG11	SP16/PG11/A
16	17.0	M20	SP16/M20/A	PG11	SP16/PG11/A
20	21.5	M20	SP20/M20/A	PG16	SP20/PG16/A
25	26.0	M25	SP25/M25/A	PG21	SP25/PG21/A
32	34.0	M32	SP32/M32/A	PG29	SP32/PG29/A
40	44.5	M40	SP40/M40/A	PG36	SP40/PG36/A
50	55.0	M50	SP50/M50/A	PG42	SP50/PG42/A
63	64.5	M63	SP63/M63/A	PG48	SP63/PG48/A
75	79.0	M75	SP75/M75/A	-	-

		METRIC THREAD	PART NUMBER	PG THREAD	PART NUMBER
M12	SP10/M12/B	PG7	SP10/PG7/B	-	-
M16	SP12/M16/B	PG9	SP12/PG9/B	-	-
M16	SP16/M16/B	PG11	SP16/PG11/B	-	-
M20	SP16/M20/B	PG11	SP16/PG11/B	-	-
M20	SP20/M20/B	PG16	SP20/PG16/B	-	-
M25	SP25/M25/B	PG21	SP25/PG21/B	-	-
M32	SP32/M32/B	PG29	SP32/PG29/B	-	-
M40	SP40/M40/B	PG36	SP40/PG36/B	-	-
M50	SP50/M50/B	PG42	SP50/PG42/B	-	-
-	-	-	-	-	-
-	-	-	-	-	-

		METRIC THREAD	PART NUMBER
-	-	-	-
-	-	-	-
M16	SP16/M16/C90	-	-
M20	SP16/M20/C90	-	-
M20	SP20/M20/C90	-	-
M25	SP25/M25/C90	-	-
M32	SP32/M32/C90	-	-
-	-	-	-
-	-	-	-
-	-	-	-

IP Rating with appropriate fitting

IP54

IP65

IP66

IP67

IP68

NEW IP69k

For use with following conduit;
Type SP, SN & LFH-SP

Type SP, SN & LFH-SP Conduit

n/a

n/a

n/a

n/a

n/a

Temperature Range

Static Applications: -50 °C to +300 °C
Moving Applications: -45 °C to +250 °C

Fitting Characteristics

Approvals



For use with following conduit;
Type SP, SN & LFH-SP

Type SP, SN & LFH-SP Conduit

n/a

n/a

n/a

n/a

n/a

Static Applications: -50 °C to +300 °C
Moving Applications: -45 °C to +250 °C



For use with following conduit;
Type SP, SN & LFH-SP

n/a

Type SP, SN & LFH-SP Conduit

n/a

n/a

n/a

n/a

Static Applications: -50 °C to +300 °C
Moving Applications: -45 °C to +250 °C





PRODUCT CHARACTERISTICS

Type

TYPE M

Description

STRAIGHT SWIVEL FITTING - EXTERNAL THREAD
For insertion into threaded entries & knockouts.

Materials

Nickel plated brass

Example



TYPE F

STRAIGHT FITTING - FIXED INTERNAL THREAD
For attachment to external threads & other fittings.
Nickel plated brass



TYPE C

SMOOTH ENTRY BUSH
For locking conduit into plain holes in enclosures.
Nickel plated brass



TYPE E

CONDUIT TERMINATOR
Cable Protection at exit point
Nickel plated brass



NOMINAL CONDUIT SIZE (mm)	OUTSIDE DIAMETER (mm)
10	10.0
12	14.0
16	17.0
16	17.0
20	21.5
25	26.0
32	34.0
40	44.5
50	55.0
63	64.5
75	79.0

METRIC THREAD	PART NUMBER	PG THREAD	PART NUMBER	NPT THREAD	PART NUMBER
-	-	-	-	-	-
M16	SP12/M16/M	PG9	SP12/PG9/M	-	-
M16	SP16/M16/M	PG11	SP16/PG11/M	3/8	SP16/038/M
M20	SP16/M20/M	PG13.5	SP16/PG13/M	3/8	SP16/038/M
M20	SP20/M20/M	PG16	SP20/PG16/M	1/2	SP20/050/M
M25	SP25/M25/M	PG21	SP25/PG21/M	3/4	SP25/075/M
M32	SP32/M32/M	PG29	SP32/PG29/M	1	SP32/100/M
M40	SP40/M40/M	-	-	-	-
M50	SP50/M50/M	-	-	-	-
-	-	-	-	-	-
-	-	-	-	-	-

METRIC THREAD	PART NUMBER
-	-
-	-
-	-
-	-
M20	SP20/M20/F
M25	SP25/M25/F
M32	SP32/M32/F
-	-
-	-
-	-
-	-
-	-

HOLE SIZE (mm)	PART NUMBER
9	SP10/9/C
12	SP12/12/C
16	SP16/16/C
16	SP16/16/C
20	SP20/20/C
25	SP25/25/C
32	SP32/32/C
40	SP40/40/C
51	SP50/51/C
61	SP63/61/C
75	SP75/75/C

HOLE SIZE (mm)
-
SP12/E
SP16/E
SP16/E
SP20/E
SP25/E
SP32/E
SP40/E
SP50/E
-
-

IP Rating with appropriate fitting

IP54

n/a

IP65

Type SP, SN & LFH-SP Conduit

IP66

n/a

IP67

n/a

IP68

n/a

NEW IP69k

n/a

Temperature Range

Static Applications: -50 °C to +300 °C
Moving Applications: -45 °C to +250 °C

Fitting Characteristics



Approvals



For use with following conduit;
Type SP, SN & LFH-SP

Type SP, SN & LFH-SP Conduit

n/a

n/a

n/a

n/a

n/a

Static Applications: -50 °C to +300 °C
Moving Applications: -45 °C to +250 °C



For use with following conduit;
Type SP, SN & LFH-SP

Type SP, SN & LFH-SP Conduit

n/a

n/a

n/a

n/a

n/a

Static Applications: -50 °C to +300 °C
Moving Applications: -45 °C to +250 °C



For use with following conduit;
Type SP, SN & LFH-SP

Type SP, SN & LFH-SP Conduit

n/a

n/a

n/a

n/a

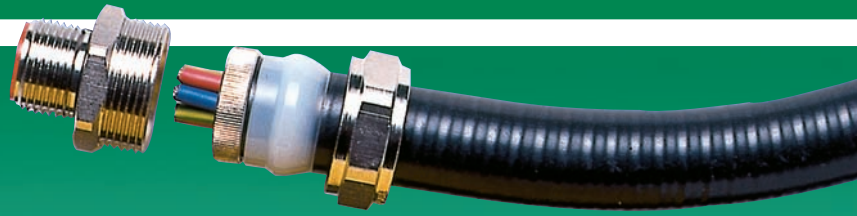
n/a

Static Applications: -50 °C to +300 °C
Moving Applications: -45 °C to +250 °C



Adaptasteel Liquid Tight metallic systems

TYPE SPL, SPLHC & SPUL COVERED STEEL FLEXIBLE CONDUIT & TYPE SPL FITTINGS



PRODUCT CHARACTERISTICS

To order quote part no, colour, & reel length - e.g. SPL10/GR/50M

Type

Description

Materials

Example

TYPE SPL

LIQUID TIGHT OIL RESISTANT
COVERED STEEL FLEXIBLE CONDUIT

PVC Covered Galvanised Steel
Colour Black (Black), Grey (GR) & Orange (OR).



TYPE SPLHC

LIQUID TIGHT EXTREME TEMPERATURE
COVERED STEEL FLEXIBLE CONDUIT

Thermoplastic Rubber Covered Galvanised Steel
Colour Black (Black) only.



TYPE SPUL

LIQUID TIGHT UL LISTED & CSA APPROVED
COVERED STEEL FLEXIBLE CONDUIT

PVC Covered Galvanised Steel with Copper Packing
Colour Grey (GR) only.



NOMINAL CONDUIT SIZE (mm)	OUTSIDE DIAMETER (mm)	US CONDUIT SIZE (in)
10	11.8	1/2"
12	14.2	5/16"
16	17.8	3/8"
20	21.1	1/2"
25	26.4	3/4"
32	33.1	1"
40	41.8	1 1/8"
50	47.9	1 1/2"
63	59.7	2"

PART NUMBER	INSIDE DIAMETER (mm)	MINIMUM BEND RADIUS (mm)	REEL LENGTH (m)
SPL10	7.0	40	10, 25, 50
SPL12	10.0	45	10, 25, 50
SPL16	12.5	50	10, 25, 50
SPL20	15.9	80	10, 25, 50
SPL25	21.0	110	10, 25, 50
SPL32	26.7	145	10, 25
SPL40	35.4	180	10, 25
SPL50	40.4	240	10, 25
SPL63	51.6	345	10, 25

PART NUMBER	INSIDE DIAMETER (mm)	MINIMUM BEND RADIUS (mm)	REEL LENGTH (m)
SPLHC10	7.0	40	25, 50
SPLHC12	10.0	45	25, 50
SPLHC16	12.5	50	25
SPLHC20	15.9	80	25
SPLHC25	21.0	110	25
SPLHC32	26.7	145	25
SPLHC40	35.4	180	25
SPLHC50	40.4	240	25
SPLHC63	51.6	345	25

PART NUMBER	INSIDE DIAMETER (mm)	MINIMUM BEND RADIUS (mm)	REEL LENGTH (m)
-	-	-	-
-	-	-	-
SPUL16	12.5	50	50
SPUL20	15.9	80	50
SPUL25	21.0	110	25
SPUL32	26.7	145	25
SPUL40	35.4	180	25
SPUL50	40.4	240	25
SPUL63	51.6	345	-

IP Rating with appropriate fitting

IP40

IP65

IP66

IP67

IP68

NEW IP69k

Temperature Range

UV Resistance

Flexibility & Fatigue Life

Fire Performance & EMI Screen

Approvals

System Applications

For use with following fittings;
Type SPL fittings

n/a

n/a

Type SPL fittings - Type M & C90

Type SPL fittings - Type A, B, & M

Type SPL fittings - Type M

Type SPL fittings - Type M

Static Applications: -20 °C to +105 °C
Moving Applications: -5 °C to +105 °C

Very High

Medium Flexibility - Medium Fatigue Life

Self Extinguishing



Machine Tools

For use with following fittings;
Type SPL fittings

n/a

n/a

Type SPL fittings - Type M & C90

Type SPL fittings - Type A, B, & M

Type SPL fittings - Type M

Type SPL fittings - Type M

Static Applications: -65 °C to +135 °C
Moving Applications: -45 °C to +150 °C

Very High

Very High Flexibility - High Fatigue Life

Self Extinguishing

Halogen Free



Extreme Temperature Environments

For use with following fittings;
Type SPL fittings

n/a

n/a

Type SPL fittings - Type M & C90

Type SPL fittings - Type A, B, & M

Type SPL fittings - Type M

Type SPL fittings - Type M

Static Applications: -15 °C to +75 °C
Moving Applications: -5 °C to +105 °C

High

Medium Flexibility - Medium Fatigue Life

Self Extinguishing



Machinery for US Markets

Adaptasteel Liquid Tight metallic systems

TYPE SPL, SPLHC & SPUL COVERED STEEL FLEXIBLE CONDUIT & TYPE SPL FITTINGS



PRODUCT CHARACTERISTICS

Type

Description

Materials

Example

TYPE M

STRAIGHT SWIVEL FITTING - EXTERNAL THREAD

For insertion into threaded entries & knockouts.

Nickel plated brass



TYPE A

STRAIGHT FITTING - FIXED EXTERNAL THREAD

For insertion into knockouts using a locknut.

Nickel plated brass



TYPE B

STRAIGHT FITTING - SWIVEL EXTERNAL THREAD

For insertion into threaded entries & knockouts.

Nickel plated brass



NOMINAL CONDUIT SIZE (mm)	OUTSIDE DIAMETER (mm)	US CONDUIT SIZE (in)
10	10.0	3/8"
12	14.0	1/2"
16	17.0	5/8"
16	17.0	3/4"
20	21.5	1 1/8"
25	26.0	1 1/4"
32	34.0	1 3/8"
40	44.5	1 7/8"
50	55.0	2 1/4"
63	64.5	2 5/8"

METRIC THREAD	PART NUMBER	PG THREAD	PART NUMBER	NPT THREAD	PART NUMBER
M12	SPL10/M12/M	PG7	SPL10/PG7/M	-	-
M16	SPL12/M16/M	PG9	SPL12/PG9/M	-	-
M16	SPL16/M16/M	PG11	SPL16/PG11/M	3/8	SPL16/038/M
M20	SPL16/M20/M	PG13.5	SPL16/PG13/M	3/8	SPL16/038/M
M20	SPL20/M20/M	PG16	SPL20/PG16/M	1/2	SPL20/050/M
M25	SPL25/M25/M	PG21	SPL25/PG21/M	3/4	SPL25/075/M
M32	SPL32/M32/M	PG29	SPL32/PG29/M	1	SPL32/100/M
M40	SPL40/M40/M	PG36	SPL40/PG36/M	1 1/4	SPL40/125/M
M50	SPL50/M50/M	PG42	SPL50/PG42/M	1 1/2	SPL50/150/M
M63	SPL63/M63/M	PG48	SPL63/PG48/M	-	-

METRIC THREAD	PART NUMBER
-	-
-	-
M16	SPL16/M16/A
M20	SPL16/M20/A
M20	SPL20/M20/A
M25	SPL25/M25/A
M32	SPL32/M32/A
-	-
-	-
-	-

METRIC THREAD	PART NUMBER
-	-
-	-
M16	SPL16/M16/B
M20	SPL16/M20/B
M20	SPL20/M20/B
M25	SPL25/M25/B
M32	SPL32/M32/B
-	-
-	-
-	-

IP Rating with appropriate fitting

IP54

IP65

IP66

IP67

IP68

NEW IP69k

For use with following conduit;
Type SPL, SPLHC & SPUL Conduit

n/a

n/a

Type SPL, SPLHC & SPUL Conduit

Type SPL, SPLHC & SPUL Conduit

Type SPL, SPLHC & SPUL Conduit - 10bar 30 mins

Type SPL, SPLHC & SPUL Conduit

Temperature Range

Static Applications: -65 °C to +300 °C
Moving Applications: -45 °C to +250 °C

Fitting Characteristics



Approvals



For use with following conduit;
Type SPL, SPLHC & SPUL Conduit

n/a

n/a

n/a

Type SPL, SPLHC & SPUL Conduit

n/a

n/a

Static Applications: -65 °C to +300 °C
Moving Applications: -45 °C to +250 °C



For use with following conduit;
Type SPL, SPLHC & SPUL Conduit

n/a

n/a

n/a

Type SPL, SPLHC & SPUL Conduit

n/a

n/a

Static Applications: -65 °C to +300 °C
Moving Applications: -45 °C to +250 °C





PRODUCT CHARACTERISTICS

Type

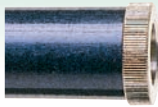
Description

Materials

Example

TYPE E

CONDUIT TERMINATOR
Cable Protection at exit point
Nickel plated brass



PART NUMBER

10	10.0	1/4"	SPL10/E
12	14.0	5/16"	SPL12/E
16	17.0	3/8"	SPL16/E
16	17.0	3/8"	SPL16/E
20	21.5	1/2"	SPL20/E
25	26.0	3/4"	SPL25/E
32	34.0	1"	SPL32/E
40	44.5	1 1/4"	SPL40/E
50	55.0	1 1/2"	SPL50/E
63	64.5	2"	SPL63/E

TYPE C90

90° COMBINED FITTING & ELBOW
with male external thread.
Nickel plated steel



METRIC THREAD

PART NUMBER

-	-
-	-
M16	SPL16/M16/C90
M20	SPL16/M20/C90
M20	SPL20/M20/C90
M25	SPL25/M25/C90
M32	SPL32/M32/C90
-	-
-	-
-	-

TYPE 45

45° ELBOW - FIXED THREAD
Nickel plated brass



METRIC THREAD

PART NUMBER

-	-
-	-
M16*	B/M16/45
M20	B/M20/45
M20	B/M20/45
M25	B/M25/45
M32	B/M32/45
-	-
-	-
-	-

* Includes M20 Internal Thread

NOMINAL CONDUIT SIZE (mm)	OUTSIDE DIAMETER (mm)	US CONDUIT SIZE (in)
10	10.0	1/4"
12	14.0	5/16"
16	17.0	3/8"
16	17.0	3/8"
20	21.5	1/2"
25	26.0	3/4"
32	34.0	1"
40	44.5	1 1/4"
50	55.0	1 1/2"
63	64.5	2"

IP Rating with appropriate fitting

IP54

IP65

IP66

IP67

IP68

NEW IP69k

Temperature Range

Fitting Characteristics

Approvals

For use with following conduit;
Type SPL, SPLHC & SPUL

n/a
n/a
n/a
n/a
n/a
n/a

Static Applications: -65 °C to +300 °C
Moving Applications: -45 °C to +250 °C

None



For use with following conduit;
Type SPL, SPLHC & SPUL

n/a
n/a
n/a
Type SPL, SPLHC & SPUL
n/a
n/a

Static Applications: -65 °C to +300 °C
Moving Applications: -45 °C to +250 °C

None



For use with following conduit;
Type SPL, SPLHC & SPUL

n/a
n/a
n/a
n/a
n/a
n/a

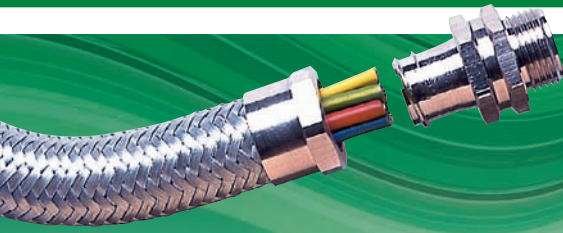
Static Applications: -65 °C to +300 °C
Moving Applications: -45 °C to +250 °C

None



Adaptasteel overbraided metallic system

TYPE SB, STC, SSB & SSBGS SPECIALIST EMI SCREEN CONDUIT & TYPE SB FITTINGS



To order quote part no & reel length - e.g. SB10/25M

PRODUCT CHARACTERISTICS

Type

TYPE SB

Description

OVERBRAIDED FLEXIBLE CONDUIT

Materials

Galvanised Steel Conduit
Galvanised Steel overbraid

Example



NOMINAL CONDUIT SIZE (mm)
OUTSIDE DIAMETER (mm)

		PART NUMBER	INSIDE DIAMETER (mm)	MINIMUM BEND RADIUS (mm)	REEL LENGTH (m)
10	10.0	SB10	6.8	25	25
13	14.0	SB12	10.3	30	25
16	17.5	SB16	13.0	35	25
20	21.5	SB20	16.9	45	25
25	26.0	SB25	21.4	55	25
32	34.0	SB32	28.1	60	10
40	43.6	SB40	37.7	80	10
50	56.0	SB50	48.4	90	10
63		SB63	57.5	115	10
75		SB75	70.0	150	10

TYPE STC

OVERBRAIDED FLEXIBLE CONDUIT

Galvanised Steel Conduit
Tinned Copper overbraid



		PART NUMBER	INSIDE DIAMETER (mm)	MINIMUM BEND RADIUS (mm)	REEL LENGTH (m)
		STC10	6.8	25	25
		STC12	10.3	30	25
		STC16	13.0	35	25
		STC20	16.9	45	25
		STC25	21.4	55	25
		STC32	28.1	60	10
		STC40	37.7	80	10
		STC50	48.4	90	10
		-	-	-	-
		-	-	-	-

TYPE SSB - NEW

OVERBRAIDED FLEXIBLE CONDUIT

Stainless Steel Conduit
Stainless Steel overbraid



		PART NUMBER	INSIDE DIAMETER (mm)	MINIMUM BEND RADIUS (mm)	REEL LENGTH (m)
		-	-	-	-
		SSB12	10.3	25	25
		SSB16	13.0	30	25
		SSB20	16.9	35	25
		SSB25	21.4	55	25
		SSB32	28.1	60	10
		-	-	-	-
		-	-	-	-
		-	-	-	-
		-	-	-	-

TYPE SSBGS - NEW

OVERBRAIDED FLEXIBLE CONDUIT

Galvanised Steel Conduit
Stainless Steel overbraid



		PART NUMBER	INSIDE DIAMETER (mm)	MINIMUM BEND RADIUS (mm)	REEL LENGTH (m)
		-	-	-	-
		SSBGS12	10.3	25	25
		SSBGS16	13.0	30	25
		SSBGS20	16.9	35	25
		SSBGS25	21.4	55	25
		SSBGS32	28.1	60	10
		-	-	-	-
		-	-	-	-
		-	-	-	-
		-	-	-	-

IP Rating with appropriate fitting

IP40

IP65

IP66

IP67

IP68

NEW IP69k

For use with following fittings;
Type SB Fittings

Type SB Fittings - Type A & B

n/a

n/a

n/a

n/a

n/a

Temperature Range

Static Applications: -50 °C to +300 °C
Moving Applications: -45 °C to +250 °C

UV Resistance

Very High

Flexibility & Fatigue Life

High Flexibility - High Fatigue Life

Fire Performance, EMI Screen & Fitting Characteristics



Approvals



System Applications

Industrial

For use with following fittings;
Type SB Fittings

Type SB Fittings - Type A & B

n/a

n/a

n/a

n/a

n/a

Static Applications: -50 °C to +300 °C
Moving Applications: -45 °C to +250 °C

Very High

High Flexibility - High Fatigue Life



Rail
Hospitals

For use with following fittings;
Type SB Fittings

Type SB Fittings - Type A & B

n/a

n/a

n/a

n/a

n/a

Static Applications: -50 °C to +300 °C
Moving Applications: -45 °C to +250 °C

Very High

High Flexibility - High Fatigue Life



Corrosive Environments

For use with following fittings;
Type SB Fittings

Type SB Fittings - Type A & B

n/a

n/a

n/a

n/a

n/a

Static Applications: -50 °C to +300 °C
Moving Applications: -45 °C to +250 °C

Very High

High Flexibility - High Fatigue Life



Chemicals
Heavy Industrial



PRODUCT CHARACTERISTICS

Type

TYPE A

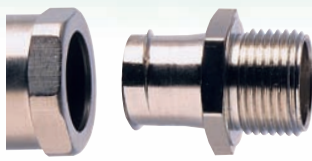
Description

STRAIGHT FITTING - FIXED EXTERNAL THREAD
For insertion into knockouts using a locknut

Materials

Nickel plated brass

Example



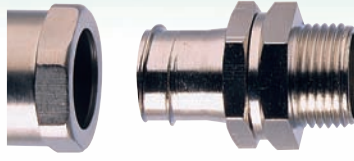
NOMINAL CONDUIT SIZE (mm)
OUTSIDE DIAMETER (mm)

		METRIC THREAD	PART NUMBER
10	10.0	M12	SB10/M12/A
13	14.0	M16	SB12/M16/A
16	17.5	M16	SB16/M16/A
20	21.5	M20	SB20/M20/A
25	26.0	M25	SB25/M25/A
32	34.0	M32	SB32/M32/A
40	43.6	M40	SB40/M40/A
50	56.0	M50	SB50/M50/A
63		M63	SB63/M63/A
75		M75	SB75/M75/A

TYPE B

STRAIGHT FITTING - SWIVEL EXTERNAL THREAD
For insertion into threaded entries & knockouts.

Nickel plated brass



		METRIC THREAD	PART NUMBER	PG THREAD	PART NUMBER ALL MTO
M12	SB10/M12/B	PG7	SB10/PG7/B		
M16	SB12/M16/B	PG9	SB12/PG9/B		
M16	SB16/M16/B	PG11	SB16/PG11/B		
M20	SB20/M20/B	PG16	SB20/PG16/B		
M25	SB25/M25/B	PG21	SB25/PG21/B		
M32	SB32/M32/B	PG29	SB32/PG29/B		
M40	SB40/M40/B	PG36	SB40/PG36/B		
M50	SB50/M50/B	PG42	SB50/PG42/B		
-	-	-	-		
-	-	-	-		

IP Rating with appropriate fitting

IP40

IP65

IP66

IP67

IP68

NEW IP69k

For use with following conduit;
Type SB, STC, SSB & SSBGS Conduit

Type SB, STC, SSB & SSBGS Conduit

n/a

n/a

n/a

n/a

n/a

Temperature Range

Static Applications: -50 °C to +300 °C
Moving Applications: -45 °C to +250 °C

UV Resistance

Flexibility & Fatigue Life

Fitting Characteristics

Approvals



For use with following conduit;
Type SB, STC, SSB & SSBGS Conduit

Type SB, STC, SSB & SSBGS Conduit

n/a

n/a

n/a

n/a

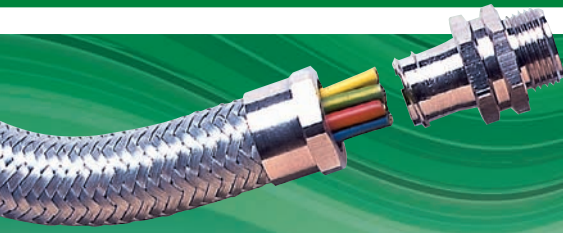
n/a

Static Applications: -50 °C to +300 °C
Moving Applications: -45 °C to +250 °C



Adaptasteel overbraided metallic system

TYPE SPB & SPTC SPECIALIST LIQUID RESISTANT, EMI SCREEN CONDUIT & TYPE SPB FITTINGS



PRODUCT CHARACTERISTICS

To order quote part no & reel length – e.g. SPB10/25M

Type
Description
Materials
Example

TYPE SPB

OVERBRAIDED FLEXIBLE CONDUIT

Galvanised Steel Conduit with PVC Covering
Galvanised Steel overbraid



NOMINAL CONDUIT SIZE (mm)
OUTSIDE DIAMETER (mm)

10 10.0
13 14.0
16 17.5
20 21.5
25 26.0
32 34.0
40 43.6
50 56.0

PART NUMBER	INSIDE DIAMETER (mm)	MINIMUM BEND RADIUS (mm)	REEL LENGTH (m)
SPB10	6.8	25	25
SPB12	10.3	25	25
SPB16	13.0	30	25
SPB20	16.9	35	25
SPB25	21.4	55	25
SPB32	28.1	60	10
SPB40	37.7	80	10
SPB50	48.4	90	10

TYPE SPTC

OVERBRAIDED FLEXIBLE CONDUIT

Galvanised Steel Conduit with PVC Covering
Tinned Copper overbraid



PART NUMBER	INSIDE DIAMETER (mm)	MINIMUM BEND RADIUS (mm)	REEL LENGTH (m)
SPTC10	6.8	25	25
SPTC12	10.3	25	25
SPTC16	13.0	30	25
SPTC20	16.9	35	25
SPTC25	21.4	55	25
SPTC32	28.1	60	10
SPTC40	37.7	80	10
SPTC50	48.4	90	10

TYPE A

STRAIGHT FITTING – FIXED EXTERNAL THREAD
For insertion into knockouts using a locknut.

Nickel plated brass



METRIC THREAD

M12
M16
M16
M20
M25
M32
M40
M50

PART NUMBER

SPB10/M12/A
SPB12/M16/A
SPB16/M16/A
SPB20/M20/A
SPB25/M25/A
SPB32/M32/A
SPB40/M40/A
SPB50/M50/A

TYPE B

STRAIGHT FITTING – SWIVEL EXTERNAL THREAD
For insertion into threaded entries & knockouts.

Nickel plated brass



METRIC THREAD

M12
M16
M16
M20
M25
M32
M40
M50

PART NUMBER

SPB10/M12/B
SPB12/M16/B
SPB16/M16/B
SPB20/M20/B
SPB25/M25/B
SPB32/M32/B
SPB40/M40/B
SPB50/M50/B

PG THREAD

PG7
PG9
PG11
PG16
PG21
PG29
PG36
PG42

PART NUMBER ALL YTD

SPB10/PG7/B
SPB12/PG9/B
SPB16/PG11/B
SPB20/PG16/B
SPB25/PG21/B
SPB32/PG29/B
SPB40/PG36/B
SPB50/PG42/B

For use with following conduit;
Type SPB & SPTC

Type SPB & SPTC

n/a
n/a
n/a
n/a
n/a

Static Applications: -50 °C to +300 °C
Moving Applications: -45 °C to +250 °C



For use with following conduit;
Type SPB & SPTC

Type SPB & SPTC

n/a
n/a
n/a
n/a
n/a

Static Applications: -50 °C to +300 °C
Moving Applications: -45 °C to +250 °C



IP Rating with appropriate fitting

- IP54
- IP65
- IP66
- IP67
- IP68
- NEW IP69k

Temperature Range

UV Resistance

Flexibility & Fatigue Life

Fire Performance, EMI Screen & Fitting Characteristics

Approvals

System Applications

For use with following fittings;
Type SPB Fittings

Type SPB Fitting – Type A & B

n/a
n/a
n/a
n/a
n/a

Static Applications: -15 °C to +70 °C
Moving Applications: -5 °C to +90 °C



Security Lighting

For use with following fittings;
Type SPB Fittings

Type SPB Fitting – Type A & B

n/a
n/a
n/a
n/a
n/a

Static Applications: -15 °C to +70 °C
Moving Applications: -5 °C to +90 °C



Hospitals
External Safety Critical Areas

Adaptasteel overbraided metallic system

TYPE SPLHCB SPECIALIST LIQUID TIGHT HIGH STRENGTH CONDUIT & TYPE SPLB FITTINGS



PRODUCT CHARACTERISTICS

Type

TYPE SPLHCB

Description

EXTREME TEMPERATURE, ABUSE RESISTANT, OVERBRAIDED FLEXIBLE CONDUIT

Materials

Galvanised Steel Conduit,
Smooth Thermoplastic Rubber Covering,
Stainless Steel Overbraid

Example



NOMINAL CONDUIT SIZE (mm)
OUTSIDE DIAMETER (mm)

16 19.8
16 19.8
20 23.1
25 28.4
32 35.1
40 44.0
50 56.0

TYPE SB
PART NUMBER

SPLHCB16
SPLHCB16
SPLHCB20
SPLHCB25
SPLHCB32
SPLHCB40
SPLHCB50

INSIDE
DIAMETER (mm)

12.5
12.5
15.9
21.0
26.7
35.4
40.4

MINIMUM BEND
RADIUS (mm)

80
80
95
115
145
180
240

REEL LENGTH (m)

25
25
25
25
10
10
10

TYPE A

STRAIGHT FITTING - FIXED EXTERNAL THREAD
For insertion into knockouts using a locknut.

Nickel plated brass



METRIC THREAD

M16
M20
M20
M25
M32
M40
M50

PART NUMBER

SPLB16/M16/A
SPLB16/M20/A
SPLB20/M20/A
SPLB25/M25/A
SPLB32/M32/A
SPLB40/M40/A
SPLB50/M50/A

TYPE B

STRAIGHT FITTING - SWIVEL EXTERNAL THREAD
For insertion into threaded entries & knockouts.

Nickel plated brass



METRIC THREAD

M16
M20
M20
M25
M32
-
-

PART NUMBER

SPLB16/M16/B
SPLB16/M20/B
SPLB20/M20/B
SPLB25/M25/B
SPLB32/M32/B
-
-

IP Rating with appropriate fitting

IP40

IP65

IP66

IP67

IP68

NEW IP69k

For use with following fittings;
Type SPLB Fittings

n/a

n/a

Type SPLB Fittings - A & B

Type SPLB Fittings - Type A & B

Type SPLB Fittings - Type A & B

n/a

Temperature Range

Static Applications: -65 °C to +135 °C
Moving Applications: -45 °C to +150 °C

UV Resistance

Very High

Flexibility & Fatigue Life

Very High Flexibility - High Fatigue Life

Fire Performance,
EMI Screen
& Fitting Characteristics



Approvals



System Applications

Railways
Underground
Public Buildings

For use with following conduit;
Type SPLHCB

n/a

n/a

Type SPLHCB

Type SPLHCB

Type SPLHCB - 10bar 30 mins

n/a

Static Applications: -65 °C to +300 °C
Moving Applications: -45 °C to +250 °C



For use with following conduit;
Type SPLHCB

n/a

n/a

Type SPLHCB

Type SPLHCB

Type SPLHCB - 10bar 30 mins

n/a

Static Applications: -65 °C to +300 °C
Moving Applications: -45 °C to +250 °C



Metallic accessories

LOCKNUTS, P-CLIPS, 90° & 45° ELBOWS, PROXIMITY SWITCH ADAPTORS & FEMALE COUPLERS

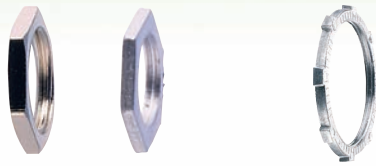
PRODUCT CHARACTERISTICS

Type
Description
Materials
Example

TYPE LNB/LNS

METALLIC LOCKNUTS

Nickel Plated Brass
Galvanised Steel



METRIC THREAD	PART NUMBER NICKEL PLATED BRASS	PART NUMBER GALVANISED STEEL	PG THREAD	PART NUMBER NICKEL PLATED BRASS	NPT THREAD	PART NUMBER STEEL
M12 x 1.0	LNB/M12X1	-	PG7	LNB/PG7	3/8"	LNS/038
M12 x 1.5	LNB/M12	-	PG9	LNB/PG9	1/2"	LNS/050
M16	LNB/M16	LNS/M16	PG11	LNB/PG11	3/4"	LNS/075
M20	LNB/M20	LNS/M20	PG13.5	LNB/PG13	1"	LNS/100
M25	LNB/M25	LNS/M25	PG16	LNB/PG16	1 1/4"	LNS/125
M32	LNB/M32	LNS/M32	PG21	LNB/PG21	1 1/2"	LNS/150
M40	LNB/M40	-	PG29	LNB/PG29	2"	LNS/200
M50	LNB/M50	-	PG36	LNB/PG36		
M63	LNB/M63	-	PG42	LNB/PG42		
M75	LNB/M75	-	PG48	LNB/PG48		

TYPE P

P-CLIP CONDUIT SUPPORT

Plated steel construction
with PVC insert



NOMINAL CONDUIT SIZE (mm)	PART NUMBER
10	P CLIP/10
12	P CLIP/12
16	P CLIP/16
16	P CLIP/16
20	P CLIP/20
25	P CLIP/25
32	P CLIP/32
40	P CLIP/40
50	P CLIP/50
63	P CLIP/63
75	P CLIP/75

TYPE 90/45

BRASS ELBOWS

Nickel Plated Brass



METRIC INTERNAL THREAD	EXTERNAL THREAD	90° ELBOW PART NUMBER	45° ELBOW PART NUMBER
M16	M16	B/M16/90	-
M20	M16	-	B/M16/45
M20	M20	B/M20/90	B/M20/45
M25	M25	B/M25/90	B/M25/45
M32	M32	B/M32/90	B/M32/45
M20	1/2" NPT	B/050/90	B/050/45
M25	3/4" NPT	B/075/90	B/075/45
M32	1" NPT	B/100/90	B/100/45
M16	PG9	B/PG9/90	-
M16	PG11	B/PG11/90	B/PG11/45
M20	PG13.5	B/PG13/90	B/PG13/45
M20	PG16	B/PG16/90	B/PG16/45
M25	PG21	B/PG21/90	B/PG21/45

Type
Description
Materials
Example

TYPE PSA

PROXIMITY SWITCH CONNECTORS

Nickel Plated Brass



INTERNAL THREAD	TO M16 INTERNAL THREAD	TO PG9 INTERNAL THREAD
M12 x 1.0	PSA16/M12	PSA9/M12
M18 x 1.0	PSA16/M18	PSA9/M18
M30	PSA16/M30	PSA9/M30

TYPE TC

UNEF THREAD CONVERTERS WITH TWO INTERNAL THREADS

Nickel Plated Brass



INTERNAL THREAD	TO M16 INTERNAL THREAD	TO M20 INTERNAL THREAD	TO M25 INTERNAL THREAD	TO M32 INTERNAL THREAD	TO PG21 INTERNAL THREAD
3/8" UNEF	B/063U-M16/TC	-	-	-	-
1/2" UNEF	B/075U-M16/TC	B/088U-M20/TC	-	-	-
3/4" UNEF	-	B/088U-M20/TC	-	-	-
1" UNEF	-	B/100U-M20/TC	B/100U-M25/TC	-	-
1 1/8" UNEF	-	B/119U-M20/TC	B/119U-M25/TC	-	-
1 1/4" UNEF	-	B/131U-M20/TC	-	-	-
1 1/2" UNEF	-	-	B/144U-M25/TC	B/144U-M32/TC	B/144U-PG21/TC

FEMALE COUPLER

BRASS FEMALE COUPLER

Nickel Plated Brass



THREAD	PART NUMBER
M16	B/M16/C
M20	B/M20/C
M25	B/M25/C
M32	B/M32/C
M40	B/M40/C
M50	B/M50/C
M63	B/M63/C
M75	B/M75/C

Metallic accessories

ENLARGERS, REDUCERS & CONVERTERS

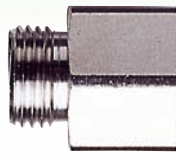
PRODUCT CHARACTERISTICS

Type
Description
Materials
Example

TYPE E, TYPE R & TYPE TC

ENLARGERS, REDUCERS & CONVERTERS

Nickel Plated Brass



EXTERNAL THREAD	TO M12 INTERNAL THREAD	TO M16 INTERNAL THREAD	TO M20 INTERNAL THREAD	TO M25 INTERNAL THREAD	TO M32 INTERNAL THREAD	TO M40 INTERNAL THREAD	TO 1/2" NPT INTERNAL THREAD
M16	B/M16-M12/R	-	B/M16-M20/E	-	-	-	-
M20	B/M20-M12/R	B/M20-M16/R	-	B/M20-M25/E	-	-	B/M20-050/TC
M25	-	-	B/M25-M20/R	-	B/M25-M32/E	-	-
M32	-	-	-	B/M32-M25/R	-	-	-
M40	-	-	-	-	B/M40-M32/R	-	-
M50	-	-	-	-	-	B/M50-M40/R	-
PG7	-	B/PG7-M16/TC	B/PG7-M20/TC	-	-	-	-
PG9	-	B/PG9-M16/TC	B/PG9-M20/TC	-	-	-	-
PG11	-	B/PG11-M16/TC	B/PG11-M20/TC	-	-	-	B/PG11-050/TC
PG13.5	-	B/PG13-M16/TC	B/PG13-M20/TC	-	-	-	-
PG16	-	B/PG16-M16/TC	B/PG16-M20/TC	B/PG16-M25/TC	-	-	B/PG16-050/TC
PG21	-	B/PG21-M16/TC	B/PG21-M20/TC	B/PG21-M25/TC	B/PG21-M32/TC	-	-
PG29	-	-	B/PG29-M20/TC	B/PG29-M25/TC	B/PG29-M32/TC	B/PG29-M40/TC	-
PG36	-	-	-	-	B/PG36-M32/TC	B/PG36-M40/TC	-
PG42	-	-	-	-	-	-	-
PG48	-	-	-	-	-	-	-
1/2"NPT	-	B/050-M16/TC	B/050-M20/TC	-	-	-	-

EXTERNAL THREAD	TO PG7 INTERNAL THREAD	TO PG9 INTERNAL THREAD	TO PG11 INTERNAL THREAD	TO PG13.5 INTERNAL THREAD	TO PG16 INTERNAL THREAD	TO PG21 INTERNAL THREAD	TO PG29 INTERNAL THREAD	TO PG36 INTERNAL THREAD	TO PG42 INTERNAL THREAD	TO PG48 INTERNAL THREAD
M16	B/M16-PG7/TC	B/M16-PG9/TC	B/M16-PG11/TC	-	-	-	-	-	-	-
M20	B/M20-PG7/TC	B/M20-PG9/TC	B/M20-PG11/TC	B/M20-PG13/TC	B/M20-PG16/TC	B/M20-PG21/TC	-	-	-	-
M25	-	-	-	-	-	B/M25-PG21/TC	-	-	-	-
M32	-	-	-	-	-	-	B/M32-PG29/TC	-	-	-
M40	-	-	-	-	-	-	-	-	-	-
M50	-	-	-	-	-	-	-	-	-	-
PG7	-	B/PG7-PG9/E	-	-	-	-	-	-	-	-
PG9	B/PG9-PG7/R	-	B/PG9-PG11/E	B/PG9-PG13/E	-	-	-	-	-	-
PG11	B/PG11-PG7/R	B/PG11-PG9/R	-	B/PG11-PG13/E	B/PG11-PG16/E	-	-	-	-	-
PG13.5	B/PG13-PG7/R	B/PG13-PG9/R	B/PG13-PG11/R	-	B/PG13-PG16/E	B/PG13-PG21/E	-	-	-	-
PG16	B/PG16-PG7/R	B/PG16-PG9/R	B/PG16-PG11/R	B/PG16-PG13/R	-	B/PG16-PG21/E	-	-	-	-
PG21	-	-	B/PG21-PG11/R	B/PG21-PG13/R	B/PG21-PG16/R	-	B/PG21-PG29/E	-	-	-
PG29	-	-	-	-	B/PG29-PG16/R	B/PG29-PG21/R	-	B/PG29-PG36/E	-	-
PG36	-	-	-	-	-	B/PG36-PG21/R	B/PG36-PG29/R	-	B/PG36-PG42/E	B/PG36-PG48/E
PG42	-	-	-	-	-	-	B/PG42-PG29/R	B/PG42-PG36/R	-	B/PG42-PG48/E
PG48	-	-	-	-	-	-	-	B/PG48-PG36/R	B/PG48-PG42/R	-