



Accessories

Cable Glands & Terminal Blocks



Range Overview

As a brand Elkay products have been in existence for over 75 years. We have incorporated some of their top selling items within this catalogue to give you the opportunity to view a comprehensive range of complementary products. Incorporating high quality design and manufacture, products include cable glands, terminal blocks, low profile DIN rail terminals and accessories.

Cable Glands

Cable Glands provide sealing and retention for a wide range of cables for general indoor and outdoor applications.

The Standard Range of "Hex" cable glands has been widely recognised as the UK "Industry Standard" for plastic cable glands for over 30 years offering excellent all-round performance. Euro Index is the next generation of Cable Glands with enhanced IP and load functionality. Also available is the Index Cable Gland range providing high strength and performance for a variety of applications. A range of accessories are available including seals, grommets, metric adaptors and reducers, locknuts and sealing washers.

System approvals available:



For a complete range of Cable Glands, Terminal Blocks & DIN Rail Terminals just ask for our catalogues!



Terminal Blocks

New from Adaptaflex is a range of general usage and OEM terminal blocks.

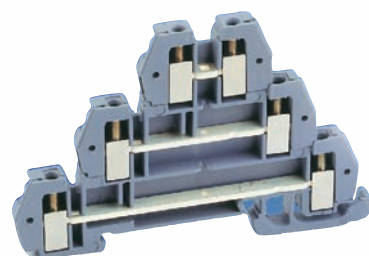
The general purpose 12 pole products are competitively priced, polyethylene terminals blocks that offer flexibility, versatility, are neutrally coloured and come with CE Approval. Available in 3, 5, 15 and 30 Amp loads they are easily cut into the required number of poles and can be mounted on a surface within an enclosure.

The new range of OEM terminal blocks is now available in standard 12-pole options. The new terminal blocks are moulded from a specially developed Polyamide 6/66 Copolymer, which meets the arduous glow wire tests as specified in International Standard IEC 60695-2-11 and IEC 60695-2-12. This range are available in eight size options and are ideal for use in appliances, lighting, industrial, domestic, and commercial applications and the white terminal blocks are available with raised or level base options.

DIN Rail Terminals

The Morsettitalia DIN-rail system offers a practical, modular range with a full choice of screw and screwless terminal blocks for the contractor and panel builder. They are extremely competitively priced, lightweight, low profile, space saving and extremely easy to use.

All products within the range are designed for use with standard symmetrical DIN rails, resulting in a more compact terminal than normal.



Cable Glands

STANDARD CABLE GLAND

PRODUCT CHARACTERISTICS

To order quote part no. & colour - e.g. 248-B

Type
Description
Materials
Example

Standard Cable Gland

GENERAL PURPOSE IP66 CABLE GLAND

Red RAL 3031 - R, White RAL 9010 - W, Grey RAL 7030 - G, Black RAL 9005 - B

Polyamide 6.6 with Nitrile Rubber Seal



PART NUMBER	METRIC THREAD	THREAD LENGTH (mm)	CABLE DIAMETER MAX (mm)	CABLE DIAMETER MIN (mm)	GLAND DEPTH (mm)	GLAND DIAMETER (mm)	ACROSS FLATS DIMENSION (mm)	PACK QUANTITY	SEALING WASHER PART NUMBER	LOCKNUT PART NUMBER
248	M16	10.0	6.0	4.0	25.0	22.0	19.0	100	96	92
250	M16	10.0	10.0	7.0	25.0	22.0	19.0	100	96	92
249	M20	11.0	6.0	4.0	25.0	25.0	19.0	100	97	93
251	M20	11.0	10.0	7.0	25.0	25.0	19.0	100	97	93
252	M20	11.0	13.0	8.0	30.5	26.0	23.0	100	97	93
264	M25	12.0	6.0	4.0	25.0	31.5	19.0	100	98	94
265	M25	12.0	10.0	7.0	25.0	31.5	19.0	100	98	94
254	M25	12.0	18.0	12.0	32.5	32.0	28.0	100	98	94
255	M32	13.0	24.0	18.0	35.0	41.0	36.0	100	98	95
256	M16	20.0	6.0	4.0	25.0	22.0	19.0	100	99	92
258	M16	20.0	10.0	7.0	25.0	22.0	19.0	100	96	92
257	M20	20.0	6.0	4.0	25.0	25.0	19.0	100	97	93
259	M20	20.0	10.0	7.0	25.0	25.0	19.0	100	97	93
266	M25	20.0	6.0	4.0	25.0	31.5	19.0	100	98	94
267	M25	20.0	10.0	7.0	25.0	31.5	19.0	100	98	94
261	M25	20.0	13.0	8.0	30.5	31.5	23.0	100	98	94
262	M25	20.0	18.0	12.0	32.5	32.0	28.0	100	98	94
263	M32	20.0	24.0	18.0	35.0	41.0	36.0	100	99	95

PART NUMBER	PG THREAD	THREAD LENGTH (mm)	CABLE DIAMETER MAX (mm)	CABLE DIAMETER MIN (mm)	GLAND DEPTH (mm)	GLAND DIAMETER (mm)	ACROSS FLATS DIMENSION (mm)	PACK QUANTITY	SEALING WASHER PART NUMBER	LOCKNUT PART NUMBER
1585	PG9	8.0	6.0	4.0	25.0	22.0	19.0	100	249-001	LNPG9
1586	PG9	8.0	10.0	7.0	25.0	22.0	19.0	100	249-001	LNPG9
1587	PG11	8.0	6.0	4.0	25.0	25.0	19.0	100	249-002	LNPG11
1588	PG11	8.0	10.0	7.0	25.0	25.0	19.0	100	249-002	LNPG11
1589	PG13.5	8.0	6.0	4.0	25.0	25.0	19.0	100	249-003	LNPG13.5
1590	PG13.5	8.0	10.0	7.0	25.0	25.0	19.0	100	249-003	LNPG13.5
1591	PG13.5	8.0	13.0	8.0	30.5	26.0	23.0	100	249-003	LNPG13.5
1592	PG16	8.0	6.0	4.0	25.0	25.0	19.0	100	249-004	LNPG16
1593	PG16	8.0	10.0	7.0	25.0	25.0	19.0	100	249-004	LNPG16
1594	PG16	8.0	13.0	8.0	30.5	26.0	23.0	100	249-004	LNPG16
1595	PG21	11.0	18.0	12.0	32.5	32.0	28.0	100	249-005	LNPG21

Type

With Twin Hole Bush

PART NUMBER	METRIC THREAD	THREAD LENGTH (mm)	CABLE DIAMETER MAX (mm)	CABLE DIAMETER MIN (mm)	GLAND DEPTH (mm)	GLAND DIAMETER (mm)	ACROSS FLATS DIMENSION (mm)	PACK QUANTITY	SEALING WASHER PART NUMBER	LOCKNUT PART NUMBER
248-T	M16	10.0	2.5 X 3mm	25.0	22.0	19.0	100	96	92	
256-T	M16	20.0	2.5 X 3mm	25.0	22.0	19.0	100	96	92	
249-T	M20	11.0	2.5 X 3mm	25.0	25.0	19.0	100	97	93	
257-T	M20	20.0	2.5 X 3mm	25.0	25.0	19.0	100	97	93	
264-T	M25	12.0	2.5 X 3mm	25.0	31.5	19.0	100	98	94	
266-T	M25	12.0	2.5 X 3mm	25.0	31.5	19.0	100	98	94	

With Twin Hole Bush & Cord Grip

PART NUMBER	METRIC THREAD	THREAD LENGTH (mm)	CABLE DIAMETER MAX (mm)	CABLE DIAMETER MIN (mm)	GLAND DEPTH (mm)	GLAND DIAMETER (mm)	ACROSS FLATS DIMENSION (mm)	PACK QUANTITY	SEALING WASHER PART NUMBER	LOCKNUT PART NUMBER
648-T	M16	10.0	2.5 X 3mm	35.0	22.0	19.0	100	96	92	
656-T	M16	20.0	2.5 X 3mm	35.0	22.0	19.0	100	96	92	
649-T	M20	11.0	2.5 X 3mm	35.0	25.0	19.0	100	97	93	
657-T	M20	20.0	2.5 X 3mm	35.0	25.0	19.0	100	97	93	
664-T	M25	12.0	2.5 X 3mm	35.0	31.5	19.0	100	98	94	
666-T	M25	12.0	2.5 X 3mm	35.0	31.5	19.0	100	98	94	

IP Rating

IP66

Key Features

Temperature Range

Static Applications: -20 °C to +90 °C

- Ideal for general use.
- IP66 Protection.
- Metric and PG versions.
- Also available in London Underground (LUL) approved materials for LSF/LFH applications.

Halogen Free

YES

Flamability

UL94 - V2

Approvals



Applications

Stations
Locomotive

Elkay's Standard Cable gland gives good all-round performance and is the corner stone of Elkay's diverse cable gland range.
Cable Glands can be supplied assembled with Locknuts and Sealing Washers as required.

Cable Glands

EURO INDEX, INDEX A2P, 90° SWEPT ELBOW, INDEX CLAW, FLAT CABLE & HEAT TRACE CABLE GLAND

PRODUCT CHARACTERISTICS

Euro Index Cable Gland

NEW GENERATION OF IP68 INDUSTRIAL 3 PART PLASTIC CABLE GLANDS.

Red RAL 3031 - R, White RAL 9010 - W, Grey - G, Black RAL 9005 - B, Dark Grey RAL 7001 - DG
Polyamide 6.6 with Nitrile Rubber Seal



PART NUMBER	THREAD	THREAD LENGTH (mm)	CABLE No.	CABLE DIAMETER MAX (mm)	CABLE DIAMETER MIN (mm)	GLAND DEPTH (mm)	GLAND DIAMETER (mm)	ACROSS FLATS DIMENSION (mm)	PACK QUANTITY
ESM12-10x	M12	8.0	0	6.5	2.0	23.0	19.0	17.0	100
ESM16-11x	M16	9.0	1	10.0	4.0	25.5	23.5	21.0	100
ESM20-12x	M20	10.0	2	12.0	6.0	27.0	27.0	24.0	100
ESM20-13x	M20	10.0	3	14.0	10.0	28.5	30.0	27.0	100
ESM25-14x	M25	11.0	4	18.0	13.0	29.0	33.0	30.0	100
ESM32-15x	M32	12.0	5	25.0	17.0	37.0	45.5	41.0	50
ESM40-16x	M40	13.0	6	32.0	24.0	42.0	55.5	50.0	25
ESP07-10x	Pg 7	8.0	0	6.5	2.0	23.0	19.0	17.0	100
ESP09-11x	Pg 9	8.0	1	10.0	4.0	25.5	23.5	21.0	100
ESP11-12x	Pg 11	8.0	2	12.0	6.0	27.0	27.0	24.0	100
ESP13.5-12x	Pg 13.5	9.0	2	12.0	6.0	27.0	27.0	24.0	100
ESP16-13x	Pg 16	10.0	3	14.0	10.0	28.5	30.0	27.0	100
ESP21-14x	Pg 21	11.0	4	18.0	13.0	29.0	33.0*	30.0*	100
ESP29-15x	Pg 29	11.0	5	25.0	17.0	37.0	45.5	41.0	50
ESP36-16x	Pg 36	13.0	6	32.0	24.0	42.0	55.5*	50.0*	25

Note. Wholesaler Packs available on this range. Pack Qty 100 Glands & Locknuts. Add WP to Part No. when ordering

To order quote part no. & colour - e.g. 200-8160-B

Index A2P Cable Gland

HIGH PERFORMANCE IP68 UPTO 15bar CABLE GLANDS.

Red RAL 3031 - R, White RAL 9010 - W, Grey - G, Black RAL 9005 - B
Polyamide 6.6 with Nitrile Rubber Seal



PART NUMBER	THREAD	THREAD LENGTH (mm)	CABLE DIAMETER MAX (mm)	CABLE DIAMETER MIN (mm)	GLAND DEPTH (mm)	GLAND DIAMETER (mm)	ACROSS FLATS DIMENSION (mm)	PACK QUANTITY	SEALING WASHER	LOCKNUT
200-8160	M16	15.0	24.0	8.0	4.0	26.0	24.0	50	96	92-B
200-8240	M20	15.0	24.0	8.0	4.0	26.0	24.0	50	97	93-B
200-8320	M20	15.0	25.0	10.0	7.5	30.0	27.0	50	97	93-B
200-8400	M20	15.0	26.0	13.2	9.5	35.5	32.0	50	97	93-B
200-8560	M25	15.0	28.0	18.0	13.0	40.0	36.0	25	98	94-B
200-8640	M32	15.0	31.0	25.0	17.5	51.0	46.0	10	99	95-B
200-8720	M40	15.0	31.0	31.5	24.5	61.0	55.0	10	121	111-B
200-8800	M50	15.0	31.0	37.0	31.0	78.0	70.0	5	122	112-B
200-8880	M50	15.0	31.0	43.0	36.5	78.0	70.0	5	122	112-B
201-8000	Pg9	8.0	24.0	8.0	4.0	26.0	24.0	50	249-001	LNP69-LG
201-8080	Pg11	8.0	25.0	10.0	7.5	30.0	27.0	50	249-002	LNP611-LG
201-8160	Pg13.5	9.0	26.0	13.2	9.5	35.5	32.0	50	249-003	LNP613.5-LG
201-8240	Pg16	10.0	26.0	13.2	9.5	35.5	32.0	50	249-004	LNP616-LG
201-8320	Pg21	11.0	28.0	18.0	13.0	40.0	36.0	25	249-005	LNP621-LG
201-8400	Pg29	11.0	31.0	25.0	17.5	51.0	46.0	10	249-006	LNP629-LG

90° Swept Elbow Cable Gland

HIGH PERFORMANCE IP68 UPTO 15bar CABLE GLANDS.

Red RAL 3031 - R, White RAL 9010 - W, Grey - G, Black RAL 9005 - B
Polyamide 6.6 with Nitrile Rubber Seal



PART NUMBER	THREAD	THREAD LENGTH (mm)	CABLE DIAMETER MAX (mm)	CABLE DIAMETER MIN (mm)	GLAND DIAMETER (mm)	ACROSS FLATS DIMENSION (mm)	PACK QUANTITY	SEALING WASHER	LOCKNUT
212-8160	M16	11	8	4	26	24	50	96	92-B
212-8400	M20	13	13.2	9.5	35.5	32	50	97	93-B

IP Rating

IP68 at 15bar

Key Features

- High performance glands.
- IP68 Protection up to 15 Bar.
- Superior material properties.
- Multiple options for greater flexibility.

Temperature Range

Static Applications: -20 °C to +90 °C

Halogen Free

YES

Flamability

UL94 - V2

Applications

Stations
Locomotive

Type

Description

Materials

Example

IP Rating

IP68 at 5bar

Temperature Range

Static Applications: -20 °C to +90 °C

Halogen Free

YES

Flamability

UL94 - V2

Approvals



Applications

Stations

Key Features

Locomotive

- New generation of industrial plastic cable glands.
- Smaller working envelope on bulkhead or panel.
- Improved cable sealing and retention.
- Wide cable acceptance range for each gland size.
- Designed to EN 50262:1999.
- Integral claw design prevents cable twisting during installation.
- Moulded sealing ring increases sealing performance.
- Glands can be packaged and branded to customers' specifications.
- Complies with international approvals.



PRODUCT CHARACTERISTICS

Type

Index Claw Cable Gland

Description

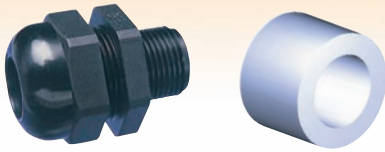
HIGH PERFORMANCE IP68 CABLE GLAND

Black RAL 9005 - B

Materials

Polyamide 6.6 with Nitrile Rubber Seal

Example



PART NUMBER	METRIC THREAD	THREAD LENGTH (mm)	CABLE DIAMETER MAX (mm)	CABLE DIAMETER MIN (mm)	GLAND DEPTH (mm)	GLAND DIAMETER (mm)	ACROSS FLATS DIMENSION (mm)	PACK QUANTITY	SEALING WASHER	LOCKNUT
211-9020	M16	15.0	9.0	5.0	24.0	26.0	24.0	50	96	92
211-9060	M20s	15.0	11.0	7.0	25.0	30.0	27.0	50	97	93
211-9100	M20	15.0	13.0	8.0	26.0	35.5	32.0	50	97	93
211-9140	M20b	15.0	16.0	12.0	26.0	35.5	32.0	50	97	93
211-9180	M20/25	15.0	16.0	12.0	26.0	35.5	32.0	50	98	94
211-9220	M25	15.0	20.5	16.0	28.0	40.0	36.0	25	98	94

Type

Index Flat Cable Gland

Description

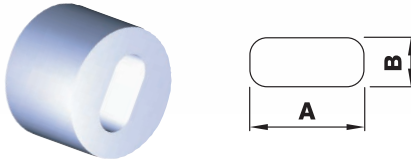
HIGH PERFORMANCE FLAT CABLE IP68 CABLE GLAND

Black RAL 9005 - B

Materials

Polyamide 6.6 with Nitrile Rubber Seal

Example



PART NUMBER	THREAD	THREAD LENGTH (mm)	CABLE DIAMETER A. MAX (mm)	CABLE DIAMETER B. MAX (mm)	CABLE DIAMETER A. MIN (mm)	CABLE DIAMETER B. MIN (mm)	PACK QUANTITY	SEALING WASHER	LOCKNUT
204-8160	M20	15.0	10.5	5.5	8.0	4.0	50	97	93
204-8240	M20	15.0	13.5	9.0	10.0	5.0	50	97	93
204-8320	M25	15.0	18.0	9.0	13.0	6.0	25	98	94
204-8400	M32	15.0	25.0	12.5	21.0	7.0	10	99	95
205-8120	Pg11	8.0	10.5	5.5	8.0	4.0	50	249-002	LNPG11
205-8200	Pg13.5	9.0	13.5	9.0	10.0	5.0	50	249-003	LNPG13.5
205-8280	Pg16	10.0	13.5	9.0	10.0	5.0	50	249-004	LNPG16
205-8360	Pg21	11.0	18.0	9.0	13.0	6.0	25	249-005	LNPG21
205-8440	Pg29	11.0	25.0	12.5	21.0	7.0	10	249-006	LNPG29

IP Rating

IP68 at 5 bar

Temperature Range

Static Applications: -20 °C to +90 °C * (+200 °C for Heat Trace)

Halogen Free

YES

Flamability

UL94 - V2

Approvals



Applications

Stations
Locomotive

Key Features

- Ideal for High Performance use.
- IP68 Protection at 5 bar.
- Metric and PG versions.
- For Cable up to +200 °C in heat trace applications.

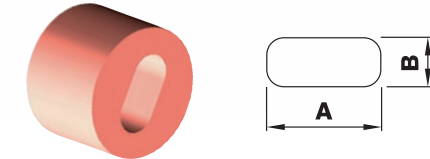
The Index Claw Gland is suitable for many applications where cables are subject to high tensile loads. Typical applications would range from portable equipment such as generators to highly mobile factory equipment. The performance of the Index Claw Gland allows for IP68 rating at 5 bar and cable anchorage of 15.9kgs.

Index Heat Trace Cable Gland

HIGH PERFORMANCE, HIGH TEMPERATURE UP TO +200 °C IP68 CABLE GLAND

Black RAL 9005 - B

Polyamide 6.6 with Nitrile Rubber Seal



PART NUMBER	THREAD	THREAD LENGTH (mm)	CABLE DIAMETER A. MAX (mm)	CABLE DIAMETER B. MAX (mm)	CABLE DIAMETER A. MIN (mm)	CABLE DIAMETER B. MIN (mm)	PACK QUANTITY	SEALING WASHER	LOCKNUT
204-9160	M20	15.0	10.5	5.5	8.0	4.0	50	97	93
204-9240	M20	15.0	13.5	9.0	10.0	5.0	50	97	93
204-9320	M25	15.0	18.0	9.0	13.0	6.0	25	98	94
204-9400	M32	15.0	25.0	12.5	21.0	7.0	10	99	95
205-9120	Pg11	8.0	10.5	5.5	8.0	4.0	50	249-002	LNPG11
205-9200	Pg13.5	9.0	13.5	9.0	10.0	5.0	50	249-003	LNPG13.5
205-9280	Pg16	10.0	13.5	9.0	10.0	5.0	50	249-004	LNPG16
205-9360	Pg21	11.0	18.0	9.0	13.0	6.0	25	249-005	LNPG21
205-9440	Pg29	11.0	25.0	12.5	21.0	7.0	10	249-006	LNPG29

Cable Glands

EMC CABLE GLAND, MINIATURE & SURFACE MOUNT CABLE GLANDS

PRODUCT CHARACTERISTICS

Index EMC Cable Gland

HIGH PERFORMANCE IP68 CABLE GLAND

Black RAL 9005 - B

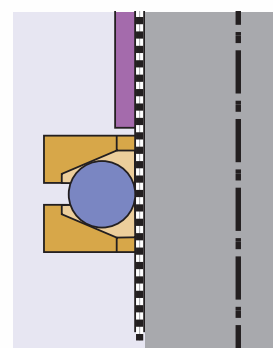
Nickel Plated Brass, Stainless Steel Spring, Santoprene Rubber Seal



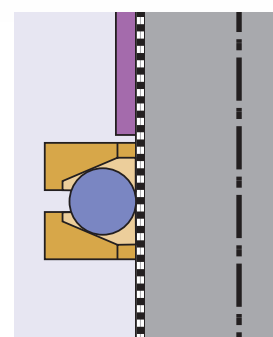
PART NUMBER	METRIC THREAD	TYPE	THREAD LENGTH (mm)	CABLE DIAMETER MAX (mm)	ACROSS FLATS DIMENSION (mm)	CABLE DIAMETER MAX (mm)	GLAND DIAMETER MIN (mm)	SCREEN DIAMETER MAX (mm)	SCREEN DIAMETER MIN (mm)	PACK QUANTITY	LOCKNUT
260-1050	M16	A	10.0	26.7	24.0	9.0	6.0	7.5	3.5	1	260-0500
260-1100	M16	A	10.0	26.7	24.0	11.0	7.0	8.5	4.0	1	260-0500
260-1200	M20	A	10.0	26.7	24.0	9.0	6.0	7.5	3.5	1	260-0600
260-1250	M20	A	10.0	26.7	24.0	11.0	7.0	8.5	4.0	1	260-0600
260-1300	M25	A	11.0	33.5	30.0	9.5	6.0	8.5	6.0	1	260-0650
260-1350	M25	A	11.0	33.5	30.0	11.0	6.0	9.0	6.0	1	260-0650
260-1700	M32	A	13.0	43.5	40.0	26.0	22.0	21.0	15.0	1	260-0700
260-1750	M40	A	14.0	54.0	50.0	29.0	25.0	25.0	18.0	1	260-0750
260-1850	M50	A	15.0	65.0	60.0	37.0	32.0	33.0	29.0	1	260-0800
260-1900	M50	A	15.0	65.0	60.0	41.0	37.0	33.0	29.0	1	260-0800
261-4020	Pg13.5	A	10.0	26.7	24.0	9.0	6.0	7.5	3.5	1	261-0200
261-4040	Pg13.5	A	10.0	26.7	24.0	11.0	7.0	8.5	4.0	1	261-0200
261-5020	Pg16	A	11.0	33.5	30.0	10.5	6.0	9.0	6.0	1	261-0250
261-5060	Pg16	A	11.0	33.5	30.0	14.0	10.0	13.0	8.0	1	261-0250
261-6080	Pg21	A	11.0	38.5	35.0	20.0	17.0	17.5	12.5	1	261-0300
261-7000	Pg29	A	13.0	43.5	40.0	23.0	19.0	21.0	15.0	1	261-0350
261-7050	Pg29	A	13.0	43.5	40.0	26.0	22.0	21.0	15.0	1	261-0350
261-8000	Pg36	A	14.0	54.0	50.0	29.0	25.0	25.0	18.0	1	261-0400
261-8050	Pg36	A	14.0	54.0	50.0	32.0	29.0	30.5	24.0	1	261-0400
261-9000	Pg42	A	15.0	66.0	60.0	41.0	37.0	33.0	29.0	1	261-0450
260-1000	M16	B	10.0	26.7	24.0	6.0	4.0	6.0	3.0	1	260-0500
260-1150	M20	B	10.0	26.7	24.0	6.0	4.0	6.0	3.0	1	260-0600
260-1400	M25	B	11.0	33.5	30.0	11.0	6.0	10.5	6.0	1	260-0650
260-1450	M25	B	11.0	33.5	30.0	14.0	10.0	13.0	8.0	1	260-0650
260-1550	M25	B	11.0	33.5	30.0	18.0	14.0	17.5	12.5	1	260-0650
260-1650	M32	A/B	13.0	43.5	40.0	23.0	19.0	21.0	15.0	1	260-0700
260-1800	M40	B	14.0	54.0	50.0	32.0	29.0	30.5	24.0	1	260-0750
261-4000	Pg13.5	B	10.0	26.7	24.0	6.0	4.0	6.0	3.0	1	261-0200
261-5000	Pg16	B	11.0	33.5	30.0	9.5	6.0	9.0	6.0	1	261-0250
261-6060	Pg21	B	11.0	38.5	35.0	18.0	14.0	17.5	12.5	1	261-0300

TYPE A - Stripped Cable Sheath. Allowing the outer sheath to be completely stripped from the cable.

TYPE B - Continuous Cable Sheath. Allowing for a ring of outer sheath only to be stripped.



TYPE A



TYPE B

IP Rating

IP68 at 10 bar

Temperature Range

Static Applications: -40 °C to +135 °C

Halogen Free

YES

Flamability

UL94 - V2

Approvals



Applications

Stations
Locomotive

Key Features

- Screen continues into enclosure.
- IP68 Protection at 10 bar.
- Metric and PG versions.
- For use with systems conforming to EN50 082 - 1/2.

The INDEX Uni Iris range of cable glands are for use with screened cable and have been designed to connect the screen of the cable to the enclosure screening system.

This is achieved by the use of two tapered rings applying force onto a continuous stainless steel spring washer pressing against the screen, ensuring positive contact.

Assembly is simple, the screen is exposed, the spring and washers are slipped in place and then the gland can be tightened.



PRODUCT CHARACTERISTICS

Type

Miniature Gland

Description

SMALL CABLE SIZE IP66 GLAND

Black RAL 9005 - B, White RAL 9010 - W

Materials

Polyamide 6.6 with Nitrile Rubber Seal

Example



PART NUMBER	METRIC THREAD	THREAD LENGTH (mm)	CABLE DIAMETER MAX (mm)	CABLE DIAMETER MIN (mm)	GLAND DEPTH (mm)	GLAND DIAMETER (mm)	ACROSS FLATS DIMENSION (mm)	PACK QUANTITY	SEALING WASHER	LOCKNUT
238	M10	8.0	5.0	2.0	21.0	17.0	15	100	68	78
240	M10	8.0	7.0	5.0	21.0	17.0	15	100	68	78
244	M10	20.0	5.0	2.0	21.0	17.0	15	100	68	78
246	M10	20.0	7.0	5.0	21.0	17.0	15	100	68	78
239	M13	8.0	5.0	2.0	21.0	17.0	15	100	69	79
241	M13	8.0	7.0	5.0	21.0	17.0	15	100	69	79
245	M13	20.0	5.0	2.0	21.0	17.0	15	100	69	79
247	M13	20.0	7.0	5.0	21.0	17.0	15	100	69	79

To order quote part no. & colour - e.g. 238-B

Surface Mounted Cable Gland

FLAT SURFACE MOUNTING IP66 CABLE GLAND

Black RAL 9005 - B

Polyamide 6.6 with Nitrile Rubber Seal



PART NUMBER	METRIC THREAD	THREAD LENGTH (mm)	CABLE DIAMETER MAX (mm)	CABLE DIAMETER MIN (mm)	GLAND DEPTH (mm)	GLAND DIAMETER (mm)	ACROSS FLATS DIMENSION (mm)	PACK QUANTITY	SEALING WASHER	LOCKNUT
275	-	-	6.0	4.0	25.0	-	19.0	100	-	-
276	-	-	10.0	7.0	25.0	-	19.0	100	-	-
277	-	-	13.0	8.0	25.0	-	23.0	100	-	-
275-T	-	-	Bore 3.5 x 2.0	25.0	-	-	19.0	100	-	-

IP Rating

IP66

Temperature Range

Static Applications: -20 °C to +90 °C * (+200 °C for Heat Trace)

Halogen Free

YES

Flamability

UL94 - V2

Approvals



Applications

Stations
Locomotive

Key Features

Miniature cable glands are ideal for small cable sizes and offer IP66 protection. They are available in Black (RAL 9005) or White (RAL 9010). Miniature cable glands are available with either long or short threads. Locknuts and sealing washers are available as separate items.

Surface mounted cable glands can be mounted to any flat surface using the two fixing holes in the flange.

Type

Surface Mounted Cable Gland

PART NUMBER

DESCRIPTION

275-T
675-T

c/w Plain Bush
c/w Cord Grip Bush

Cable Glands

CORD GRIP BRUSHES, PG - METRIC ADAPTORS & REDUCERS

PRODUCT CHARACTERISTICS

Type

Threaded Cord Grips

Description

Black RAL 9005 - B

Materials

Polyamide 6.6

Example



PART NUMBER	THREAD	THREAD LENGTH (mm)	CABLE DIAMETER MAX (mm)	CABLE DIAMETER MIN (mm)	ACROSS FLATS DIMENSION (mm)	GRIP DEPTH (mm)	PACK QUANTITY	SEALING WAHER	LOCKNUT
743-B	M16	9.0	11.0	3.5	19.0	23.5	100	96	92-B
744-B	M20	12.0	14.5	4.0	23.0	29.5	100	97	93-B
745-B	M25	12.0	18.0	8.0	27.0	29.5	100	98	94-B
746-B	Pg9	9.0	11.0	3.5	19.0	23.5	100	207-401	LNPG9
747-B	Pg13.5	12.0	14.5	4.0	23.0	29.5	100	207-403	LNPG13.5
748-B	Pg16	12.0	18.0	8.0	27.0	27.5	100	207-404	LNPG16

Type

Cable Gland with Threaded Cord Grip

PART NUMBER	THREAD	THREAD LENGTH (mm)	CABLE DIAMETER MAX (mm)	CABLE DIAMETER MIN (mm)	PART NUMBER	THREAD	THREAD LENGTH (mm)	CABLE DIAMETER MAX (mm)	CABLE DIAMETER MIN (mm)	PACK QUANTITY	SEALING WAHER	LOCKNUT
648-B	M16	10.0	6.0	4.0	656-B	M16	20.0	6.0	4.0	100	96	92
650-B	M16	10.0	10.0	7.0	658-B	M16	20.0	10.0	7.0	100	96	92
649-B	M20	11.0	6.0	4.0	657-B	M20	20.0	6.0	4.0	100	97	93
651-B	M20	11.0	10.0	7.0	659-B	M20	20.0	10.0	7.0	100	97	93
652-B	M20	11.0	13.0	8.0	660-B	M20	20.0	13.0	8.0	100	97	93
664-B	M25	12.0	6.0	4.0	666-B	M25	20.0	6.0	4.0	100	98	94
665-B	M25	12.0	10.0	7.0	667-B	M25	20.0	10.0	7.0	100	98	94
654-B	M25	12.0	18.0	12.0	652-B	M25	20.0	18.0	12.0	100	98	94

IP Rating

IP66

Temperature Range

Static Applications: -20 °C to +90 °C

Halogen Free

YES

Flamability

UL94 - V2

Approvals



Applications

Stations
Locomotive

Key Features

- Metric and Pg sizes available.
- Cable gland version offers IP66 protection.



PRODUCT CHARACTERISTICS

PG - Metric Adaptors & Reducers

EASY TO INSTALL ADAPTORS & REDUCERS

TYPE A & B - Black RAL 9005 - B, TYPE C - Grey RAL 7035 - GR

TYPE A & B - Polyamide 6.6. TYPE C - Polystyrene

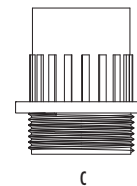
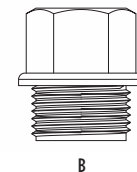
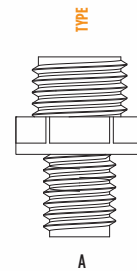
Type
Description
Materials
Example



PART NUMBER	TYPE	CABLE DIAMETER MIN (mm)	MALE THREAD	FEMALE THREAD	PACK QUANTITY	SEALING WASHER	LOCKWIT
464*	A	Metric - Metric Adaptor	M13	M10* (male)	100	69	79
451	B	Metric - Metric Adaptor	M20	M16	100	97	93
468	B	Metric - Metric Adaptor	M25	M16	100	98	94
474	B	Pg - Metric Adaptor	Pg9	M16	100	249-001	LNPG9
475	B	Pg - Metric Adaptor	Pg11	M16	100	249-002	LHNPg11
476	B	Pg - Metric Adaptor	Pg13.5	M16	100	249-003	LNPg13.5
477	B	Pg - Metric Adaptor	Pg16	M16	100	249-004	LNPg16
478	B	Pg - Metric Adaptor	Pg13.5	M20	100	249-003	LNPg13.5
480	B	Pg - Metric Adaptor	Pg13.5	M20	100	249-003	LNPg13.5

Conduit Adaptor

294-403	C	Conduit Adaptor	Pg16	Pg13.5	30	249-004	SUPPLIED
294-404	C	Conduit Adaptor	Pg16	Pg16	30	249-004	SUPPLIED
295-404	C	Conduit Adaptor	Pg21	Pg16	25	249-005	SUPPLIED
295-405	C	Conduit Adaptor	Pg21	Pg21	20	249-005	SUPPLIED
284-416	C	Conduit Adaptor	Pg16	M16	30	249-004	SUPPLIED
284-420	C	Conduit Adaptor	Pg16	M20	30	249-004	SUPPLIED
285-420	C	Conduit Adaptor	Pg21	M20	25	249-005	SUPPLIED
285-425	C	Conduit Adaptor	Pg21	M25	25	249-005	SUPPLIED
285-432	C	Conduit Adaptor	Pg21	M32	15	249-005	SUPPLIED



IP Rating

n/a

Temperature Range

Static Applications: -20 °C to +90 °C - Type A & B
Static Applications: -10 °C to +75 °C - Type C

Halogen Free

YES

Flamability

UL94 - V2

Approvals



Applications

Stations
Locomotive

Key Features

- Thread adaptors/reducers.
- Conduit adaptors.
- Easy to install.

Cable Glands

STOPPING PLUGS & CABLE ACCESSORIES

PRODUCT CHARACTERISTICS

Type

Stopping Plugs

Description

General Use Stopping Plug

Materials

Black RAL 9005 - B, Grey - G
Polyamide 6.6

Example



PART NUMBER	THREAD	PLUG DIAMETER (mm)	PLUG DEPTH (mm)	HEAD DEPTH (mm)	PACK QUANTITY
64-B	M16	19.0	14.0	5.0	100
65-B	M20	23.0	18.0	6.0	100
66-B	M25	28.0	18.0	7.0	100
67-B	M32	36.0	19.0	3.0	100
313-G	Pg11	22.0	9.5	-	100
314-G	Pg13.5	25.0	9.5	-	100
315-G	Pg16	27.0	9.5	-	100

Cord Grips

METRIC CORD GRIPS

Black RAL 9005 - B, White - W
See Table Below



PART NUMBER	THREAD	GRIP DIAMETER MAX (mm)	MATERIAL	PACK QUANTITY
750	M10	6.4	ABS	500
767	M13	10.7	ABS	500
765	M10	6.8	Acetal	1000
713**	M10	6.8	Brass	500
896-B	M13	9.2	ABS	1000
714-B	M10	9.4	ABS	1000

** Brass Locknut

Flex Protection Cable Gland

METRIC & PG SEALING WASHERS

Black RAL 9005 - B
Polyamide 6.6



PART NUMBER	THREAD	CABLE DIAMETER MAX (mm)	CABLE DIAMETER MIN (mm)	PACK QUANTITY
M-16P-07	M16	7.0	5.0	10
M-16P-09	M16	9.0	6.0	10
M-20P-11	M20	11.0	7.0	10
M-20P-13	M20	12.7	8.0	10

Type

Clamping Sets

Type

PART NUMBER	THREAD	Clamp Depth (mm)	MATERIAL	MATERIAL	MATERIAL	ACROSS FLATS DIMENSION (mm)	PACK QUANTITY
303	M16	13.0	9.0	11.0	6.0	4.0	100
304	M16	13.0	9.0	11.0	10.0	7.0	100
305	M20	15.5	9.0	14.5	13.0	8.0	100
306	M25	17.5	10.0	19.0	12.0	18.0	100
307	M32	20.0	10.0	25.0	18.0	24.0	100

Clamping Bushes

PART NUMBER	THREAD	CABLE DIAMETER MAX (mm)	CABLE DIAMETER MAX (mm)	CABLE DIAMETER MIN (mm)	ACROSS FLATS DIMENSION (mm)	PACK QUANTITY
54-B	M13*	11.0	-	8.0	15.0	100
46-B	M16	14.0	5.0	10.5	19.0	100
47-B	M20	18.0	6.0	13.0	23.0	100
48-B	M25	18.0	6.0	19.0	28.0	100
49-B	M32	19.0	7.0	25.0	36.0	100

IP Rating

n/a

IP Rating

n/a

Temperature Range

Static Applications: -10 °C to +90 °C

Temperature Range

Static Applications: -20 °C to +90 °C

Halogen Free

YES

Halogen Free

YES

Flamability

UL94 - V2

Flamability

UL94 - V2

Approvals



Approvals



Applications

Stations
Locomotive

Applications

Stations
Locomotive

Key Features

- Ideal for general use.
- Metric and Pg versions.

Key Features

- Ideal for General Use.
- Metric version.

Adaptaflex range of Stopping Plugs are ideal for sealing cable entries.

Adaptaflex offer a wide range of Locknuts and Sealing Washers including both Metric and Pg sizes manufactured in a range of colours and styles.

Terminal Blocks

TYPE 1512 & 4012 POLYAMIDE TERMINAL BLOCKS

PRODUCT CHARACTERISTICS

Type

Type 1512

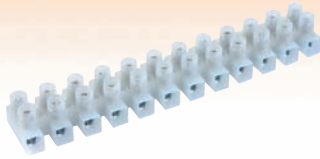
Description

2.5mm² Polyamide Terminal Blocks

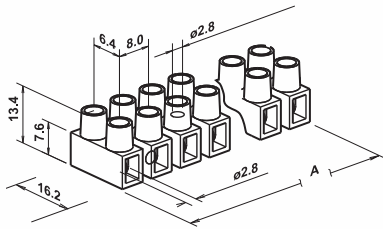
Materials

White Polyamide 6, Galvanised Brass Inserts & Galvanised Steel Screws

Example



Dimensions



PART NUMBER	BASE	WIRE PROTECTOR	"T" INSERT	No. POLES	WIDTH A (mm)	RATING	PACK QUANTITY
1512LE	LEVEL	-	-	12 POLE	94	14A	50
1512/151E	RAISED	YES	-	12 POLE	94	14A	50
1512LTE	LEVEL	-	YES	12 POLE	94	14A	50
1512TE	RAISED	-	YES	12 POLE	94	14A	50

Nominal Clamping Area

2.5mm²

Nominal Voltage

450V

Max Ambient Temp

PA T85

Fire Performance

Halogen Free

Flamability

UL94 - V2

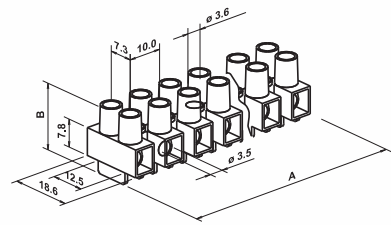
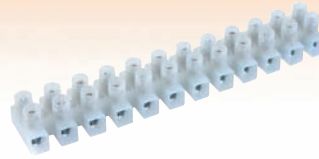
Approvals



Type 4012

4mm² Polyamide Terminal Blocks

White Polyamide 6, Galvanised Brass Inserts & Galvanised Steel Screws



PART NUMBER	BASE	WIRE PROTECTOR	"T" INSERT	No. POLES	WIDTH A (mm)	HEIGHT B (mm)	RATING	PACK QUANTITY
4012LE	LEVEL	-	-	12 POLE	117	15	25A	50
4012/401E	RAISED	YES	-	12 POLE	117	18.5	25A	50
4012LT/402E	LEVEL	YES	YES	12 POLE	117	15	25A	50
4012TE	RAISED	-	YES	12 POLE	117	18.5	25A	50

4mm²

450V

PA T85

Halogen Free

UL94 - V2



Terminal Blocks

TYPE 6012, 10012 & 16012 POLYAMIDE & TYPE ELK POLYETHYLENE TERMINAL BLOCKS

PRODUCT CHARACTERISTICS

Type

Type 6012

Description

6mm² Polyamide Terminal Blocks

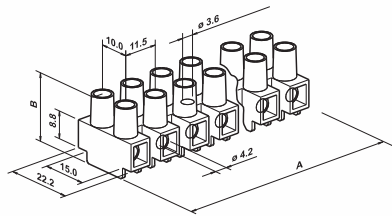
Materials

White Polyamide 6, Galvanised Brass Inserts & Galvanised Steel Screws

Example



Dimensions



PART NUMBER	BASE	WIRE PROTECTOR	"T" INSERT	No. POLES	WIDTH A (mm)	HEIGHT B (mm)	RATING	PACK QUANTITY
6012/601E	RAISED	YES	-	12 POLE	133.7	20.8	32A	25
6012TE	RAISED	-	YES	12 POLE	133.7	20.8	32A	25
6012L/601E	LEVEL	YES	-	12 POLE	133.7	19.3	32A	25
6012LE	LEVEL	-	-	12 POLE	133.7	19.3	32A	25

Nominal Clamping Area

6mm²

Nominal Voltage

450V

Max Ambient Temp

PA T85

Fire Performance

Halogen Free

Flamability

UL94 - V2

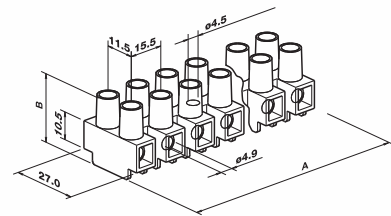
Approvals



Type 10012

10mm² Polyamide Terminal Blocks

White Polyamide 6, Galvanised Brass Inserts & Galvanised Steel Screws



PART NUMBER	BASE	WIRE PROTECTOR	"T" INSERT	No. POLES	WIDTH A (mm)	HEIGHT B (mm)	RATING	PACK QUANTITY
10012/1001	RAISED	YES	-	12 POLE	180	28	45A	10
10012L	LEVEL	-	-	12 POLE	180	22	45A	10
10012L/1001	LEVEL	YES	-	12 POLE	180	22	45A	10
10012LT	LEVEL	-	-	12 POLE	180	22	45A	10
10012T	RAISED	-	-	12 POLE	180	28	45A	10
10012	RAISED	-	-	12 POLE	180	28	45A	10

10mm²

450V

PA T85

Halogen Free

UL94 - V2





PRODUCT CHARACTERISTICS

Type

Type 16012

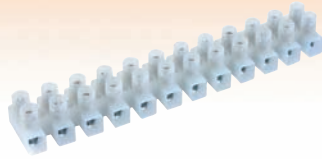
Description

16mm² Polyamide Terminal Blocks

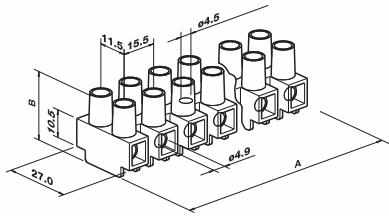
Materials

White Polyamide 6, Galvanised Brass Inserts & Galvanised Steel Screws

Example



Dimensions

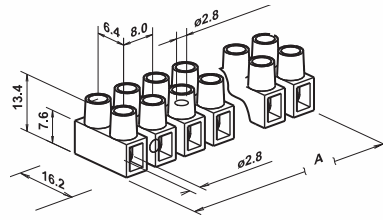
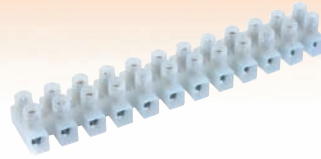


PART NUMBER	BASE	WIRE PROTECTOR	'T' INSERT	No. POLES	WIDTH A (mm)	HEIGHT B (mm)	RATING	PACK QUANTITY
16012	RAISED	-	-	12 POLE	180	28	60A	10
16012LT	LEVEL	-	-	12 POLE	180	22	60A	10
16012/1601	RAISED	YES	-	12 POLE	180	28	60A	10
16012L/1601	LEVEL	YES	-	12 POLE	180	22	60A	10
16012T	RAISED	-	-	12 POLE	180	28	60A	10
16012L	LEVEL	-	-	12 POLE	180	22	60A	10

Type ELK

2.5mm² Polyethylene Economy Range Terminal Blocks

White Polyethylene, Galvanised Brass Inserts & Plated Steel Screws



PART NUMBER	BASE	MAX CSA	'T' INSERT	No. POLES	NOMINAL VOLTAGE	RATING	PACK QUANTITY
ELK3A-12	LEVEL	4	-	12 POLE	380	3A	10
ELK5A-12	LEVEL	6	-	12 POLE	380	5A	10
ELK15A-12	LEVEL	10	-	12 POLE	400	15A	10
ELK30A-12	LEVEL	16	-	12 POLE	400	30A	10

Nominal Clamping Area

16mm²

Nominal Voltage

450V

Max Ambient Temp

PA T85

Fire Performance

Halogen Free

Flamability

UL94 - V2

Approvals



Nominal Clamping Area

2.5mm²

Nominal Working Temp

80 °C

Approvals



Terminal Blocks

DIN RAIL TERMINALS

PRODUCT CHARACTERISTICS

Type

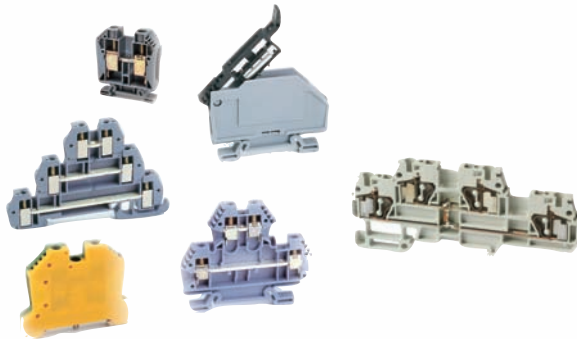
Din Rail Terminals

Description

The Morsettitalia DIN-rail system offers a practical, modular range with a full choice of screw and screwless terminal blocks for the contractor and panel builder. They are extremely competitively priced, lightweight, low profile, space saving and extremely easy to use.

All products within the range are designed for use with standard symmetrical DIN rails, resulting in a more compact terminal than normal.

Example



PART NUMBER

DESCRIPTION

TERMINAL BLOCKS

43406	EURO DIN RAIL T.BLOCKCOLOUR - GREY 2.5mm
43400	EURO DIN RAIL T. BLOCK - GREY 4mm
43401	EURO DIN RAIL T. BLOCK COLOUR - GREY 6mm
43402	EURO DIN RAIL T. BLOCKCOLOUR - GREY 10mm
43403	EURO DIN RAIL T.B. COLOUR - GREY 16-25mm

EARTH TERMINAL BLOCKS

43454	EURO EARTH - DIN RAIL TERMINAL BLOCK 4mm
43450	EURO EARTH - DIN RAIL TERMINAL BLOCK 6mm
43458	EURO EARTH - DIN RAIL TERMINAL BLOCK 10mm
43451	EURO EARTH - DIN RAIL TERMINAL BLOCK 25mm
43457	EURO EARTH - DIN RAIL TERMINAL BLOCK 50mm

END PLATES

43010	EURO END PLATE - GREY 2.5-4mm
43011	EURO END PLATE - GREY 6-10mm
43013	EURO END PLATE - GREY 16-25mm
43014	EURO END PLATE - GREY 35-50mm

JUMPER BARS

43025/0.5MS	EURO JUMPER BAR - 0.5m & 98 SCREWS 2.5mm
43020/0.5MS	EURO JUMPER BAR - 0.5m & 82 SCREWS 4mm
43021/0.5MS	EURO JUMPER BAR - 0.5m & 70 SCREWS 6mm
43022/0.5MS	EURO JUMPER BAR - 0.5m & 55 SCREWS 10mm
43023/0.5MS	EURO JUMPER BAR - 0.5m & 41 SCREWS 16mm
43024/0.5MS	EURO JUMPER BAR - 0.5m & 31 SCREWS 35mm

END BRACKETS

43442	EURO END BRACKET
-------	------------------

DIN RAIL

43910/F	DIN RAIL 2 METER LENGTHS EURO - OMEGA H-35 - 2M LENGTHS STEEL DIN RAIL
---------	--

SEPARATORS

43015	EURO SEPARATOR 2.5-4mm
43016	EURO SEPARATOR 6-10mm

Approvals





Aquasafe

Waterproof plug & connector

Range Overview - In-Line (IP68 - 16A)

The in-line range is typically used where temporary connections are required for power. The range offers a variety of cable acceptance sizes, whilst maintaining a compact working envelope. The housings are defined as either Female or Male. The Female housing has the collar moulding, and the Male housing is smaller in diameter, and fits inside the opposite housing. The inner connectors are defined as either a Plug or Socket according to the metal inserts.

Bulkheads (IP68 - 16A)

If power is being distributed and controlled from a fixed installation, it may be more appropriate to mount products into an enclosure or electrical equipment. As an alternative to the in-line connector, Adaptaflex offer complimentary mounting options including;

- **Chassis / panel mounting (screwed)**
Supplied with M25 Locknut and Sealing Washer as standard, the thread has flats to orientate the housing during installation.
- **Bulkhead / surface mounting (flanged)**
Flanged to suit surface mounting where space is restricted behind the application.

Each bulkhead / panel mounted housing can be used in conjunction with the appropriate mating in-line connector.



Sealing Caps (IP68 - 16A)

Sealing caps can be fitted to each individual housing to maintain protection when the connectors are separated. This ensures electrical safety at all times, even when the connectors are not in use. The caps are operated in exactly the same manner as the connectors, by the latch mechanism held within the collar. A strap is also provided to retain the sealing cap onto the housings, for light static applications..

Switched Enclosure Range (IP54 - 13A)

Adaptaflex now offers a NEW range of enclosures to complement there AQUASAFE connection range. These enclosures are deigned to meet the requirements in damp and exposed environments.

System approvals available:



IEC 61984



PRODUCT CHARACTERISTICS

Type

In-Line Aqua-safe

Description

IP68 - 16A STANDARD IN_LINE PRODUCT

Materials

Black
Plug & Socket Connector: Polycarbonate. Outer Housing: Glass Filled Nylon with Nitrile Rubber Seal

Example



PART NUMBER	DESCRIPTION	CONNECTOR DETAILS	CABLE RANGE	PACK QUANTITY
185-9000	In-Line Waterproof Connector Assembly	3 Pole Plug & Socket	5-9mm	1
185-9100	In-Line Waterproof Connector Assembly	3 Pole Plug & Socket	8-13mm	1
185-9200	In-Line Waterproof Connector Assembly	3 Pole Plug & Socket	12-16mm	1
185-0A1011-P030-1	In-Line Waterproof Female Housing	3 Pole Plug	5 - 9mm	1
185-0A1021-P030-1	In-Line Waterproof Female Housing	3 Pole Plug	8 - 13mm	1
185-0A1031-P030-1	In-Line Waterproof Female Housing	3 Pole Plug	12 - 16mm	1
185-1A1011-S030-1	In-Line Waterproof Male Housing	3 Pole Socket	5 - 9mm	1
185-1A1021-S030-1	In-Line Waterproof Male Housing	3 Pole Socket	8 - 13mm	1
185-1A1031-S030-1	In-Line Waterproof Male Housing	3 Pole Socket	12 - 16mm	1

Type

Bulkhead Aqua-safe

Description

IP68 - 16A STANDARD BULKHEAD PRODUCT

Materials

Black
Plug & Socket Connector: Polycarbonate. Outer Housing: Glass Filled Nylon with Nitrile Rubber Seal

Example



PART NUMBER	DESCRIPTION	CONNECTOR DETAILS	CABLE RANGE	PACK QUANTITY
185-0B1000-P030-1	Aqua-safe Bulkhead Female Housing	Flanged	3 Pole Plug	1
185-0E1000-P030-1	Aqua-safe Bulkhead Female Housing	Screwed	3 Pole Plug	1
185-1B1000-S030-1	Aqua-safe Bulkhead Male Housing	Flanged	3 Pole Socket	1
185-1E1000-S030-1	Aqua-safe Bulkhead Male Housing	Screwed	3 Pole Socket	1

IP Rating

IP68 upto 2 bar

Temperature Range

Static Applications: -25 °C to +80 °C

Halogen Free

YES

Flamability

UL94 - V2

Approvals

 IEC 61984

Applications

Stations
Locomotive



PRODUCT CHARACTERISTICS

Type

Sealing Caps

Description

IP68 - 16A SEALING CAPS

Black

Example



FEMALE SEALING CAP



MALE SEALING CAP

PART NUMBER	DESCRIPTION	PART NUMBER
185-6100	Male Sealing Cap with strap to suit all Female Housings	100
185-6200	Female Sealing Cap with strap to suit all Male Housings	100

Type

Switched Enclosure Range

Description

IP54 - 13A ENCLOSURES

Black

Example



PART NUMBER	DESCRIPTION	PART NUMBER
ELK-2-SDB	2 Way Switched Weatherproof Enclosure	1
ELK-3-SDB	3 Way Switched Weatherproof Enclosure	1
ELK-4-SDB	4 Way Switched Weatherproof Enclosure	1
ELK-6-SDB	6 Way Switched Weatherproof Enclosure	1
ELK-3-A-SDB	Aquasafe 3 Way Switch Weatherproof Enclosure	1

IP Rating

IP54

Temperature Range

Static Applications: -25 °C to +80 °C

Halogen Free

YES

Flamability

UL94 - V2

Approvals

CE IEC 61984

Applications

Stations
Locomotive